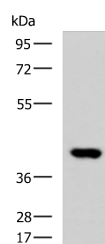


FOXI1 Polyclonal Antibody

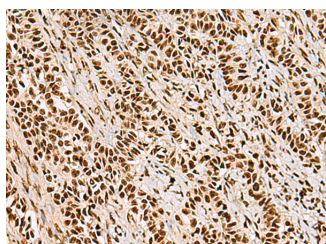
Catalog No.	E-AB-19881	Reactivity	H
Storage	Store at -20°C. Avoid freeze / thaw cycles.	Host	Rabbit
Applications	WB,IHC,ELISA	Isotype	IgG

Note: Centrifuge before opening to ensure complete recovery of vial contents.

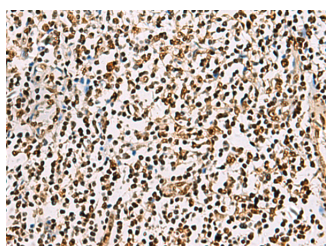
Images



Western blot analysis of Human heart tissue lysate using FOXI1 Polyclonal Antibody at dilution of 1:800



Immunohistochemistry of paraffin-embedded Human ovarian cancer tissue using FOXI1 Polyclonal Antibody at dilution of 1:55(×200)



Immunohistochemistry of paraffin-embedded Human tonsil tissue using FOXI1 Polyclonal Antibody at dilution of 1:55(×200)

Immunogen Information

Immunogen	Synthetic peptide of human FOXI1
Gene Accession	NP036320
Swissprot	Q12951
Synonyms	FKH10,FKHL10,FOXI1,FOXI1,FREAC6,FREAC-6,FREAC6,HFH3,HFH-3,HFH3,MGC34197

Product Information

Calculated MW	41 kDa
Observed MW	Refer to figures
Buffer	PBS with 0.05% NaN ₃ and 40% Glycerol,pH7.4
Purify	Antigen affinity purification
Dilution	WB 1:500-1:2000, IHC 1:50-1:200, ELISA 1:5000-1:10000

Background

This gene belongs to the forkhead family of transcription factors, which is characterized by a distinct forkhead domain. This gene may play an important role in the development of the cochlea and vestibulum, as well as in embryogenesis. The encoded protein has been found to be required for the transcription of four subunits of a proton pump found in the inner ear, the kidney, and the epididymis. Mutations in this gene have been associated with deafness, autosomal recessive 4.

For Research Use Only

Thank you for your recent purchase.
 If you would like to learn more about antibodies, please visit www.elabscience.com.

**Focus on your research
 Service for life science**

Applications:WB-Western Blot IHC-Immunohistochemistry IF-Immunofluorescence IP-Immunoprecipitation FC-Flow cytometry ChIP-Chromatin Immunoprecipitation Reactivity: H-Human R-Rat M-Mouse Mk-Monkey Dg-Dog Ch-Chicken Hm-Hamster Rb-Rabbit Sh-Sheep Pg-Pig Z-Zebrafish X-Xenopus C-Cow.