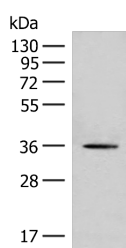


## MLST8 Polyclonal Antibody

<b>Catalog No.</b>	E-AB-19888	<b>Reactivity</b>	H,M,R
<b>Storage</b>	Store at -20°C. Avoid freeze / thaw cycles.	<b>Host</b>	Rabbit
<b>Applications</b>	WB,ELISA	<b>Isotype</b>	IgG

**Note:** Centrifuge before opening to ensure complete recovery of vial contents.

### Images



Western blot analysis of HeLa cell lysate using MLST8 Polyclonal Antibody at dilution of 1:500

### Immunogen Information

<b>Immunogen</b>	Synthetic peptide of human MLST8
<b>Gene Accession</b>	NP071767
<b>Swissprot</b>	Q9BVC4
<b>Synonyms</b>	GbetaL,GBL,GBL protein,LST8,LST8,MGC111011,mLST8,WAT1,WAT1 homolog (S. pombe)

### Product Information

<b>Calculated MW</b>	36 kDa
<b>Observed MW</b>	Refer to figures
<b>Buffer</b>	PBS with 0.05% NaN <sub>3</sub> and 40% Glycerol,pH7.4
<b>Purify</b>	Antigen affinity purification
<b>Dilution</b>	WB 1:500-1:2000, ELISA 1:5000-1:10000

### Background

MLST8 (MTOR Associated Protein, LST8 Homolog) is a Protein Coding gene. Diseases associated with MLST8 include Benign Familial Neonatal Epilepsy and Childhood Absence Epilepsy. Among its related pathways are Constitutive Signaling by AKT1 E17K in Cancer and RET signaling.

#### For Research Use Only

Thank you for your recent purchase.

If you would like to learn more about antibodies, please visit [www.elabscience.com](http://www.elabscience.com).

**Focus on your research  
 Service for life science**

Applications:WB-Western Blot IHC-Immunohistochemistry IF-Immunofluorescence IP-Immunoprecipitation FC-Flow cytometry ChIP-Chromatin Immunoprecipitation Reactivity: H-Human R-Rat M-Mouse Mk-Monkey Dg-Dog Ch-Chicken Hm-Hamster Rb-Rabbit Sh-Sheep Pg-Pig Z-Zebrafish X-Xenopus C-Cow.