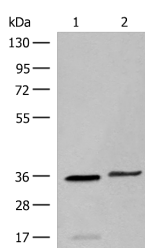


## LGALS4 Polyclonal Antibody

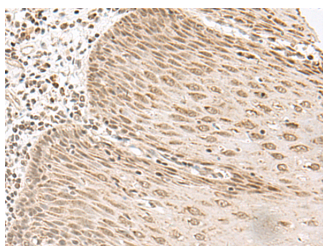
<b>Catalog No.</b>	E-AB-19890	<b>Reactivity</b>	H
<b>Storage</b>	Store at -20°C. Avoid freeze / thaw cycles.	<b>Host</b>	Rabbit
<b>Applications</b>	WB,IHC,ELISA	<b>Isotype</b>	IgG

**Note:** Centrifuge before opening to ensure complete recovery of vial contents.

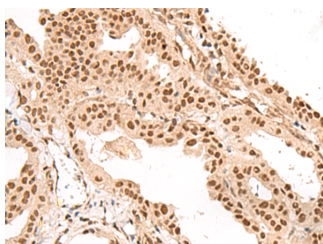
### Images



Western blot analysis of Human sigmoid tissue and HT-29 cell lysates using LGALS4 Polyclonal Antibody at dilution of 1:400



Immunohistochemistry of paraffin-embedded Human esophagus cancer tissue using LGALS4 Polyclonal Antibody at dilution of 1:35(×200)



Immunohistochemistry of paraffin-embedded Human thyroid cancer tissue using LGALS4 Polyclonal Antibody at dilution of 1:35(×200)

### Immunogen Information

<b>Immunogen</b>	Synthetic peptide of human LGALS4
<b>Gene Accession</b>	NP006140
<b>Swissprot</b>	P56470
<b>Synonyms</b>	Antigen NY CO 27, Antigen NY-CO-27, Antigen NYCO27, GAL 4, Gal-4, Galectin-4, LEG4, LGALS4

### Product Information

<b>Calculated MW</b>	36 kDa
<b>Observed MW</b>	Refer to figures
<b>Buffer</b>	PBS with 0.05% NaN <sub>3</sub> and 40% Glycerol, pH7.4
<b>Purify</b>	Antigen affinity purification
<b>Dilution</b>	WB 1:500-1:2000, IHC 1:30-1:150, ELISA 1:5000-1:10000

### Background

The galectins are a family of beta-galactoside-binding proteins implicated in modulating cell-cell and cell-matrix interactions. The expression of this gene is restricted to small intestine, colon, and rectum, and it is underexpressed in colorectal cancer. LGALS4 (Galectin 4) is a Protein Coding gene. Diseases associated with LGALS4 include Paraneoplastic Cerebellar Degeneration and Colorectal Cancer. Among its related pathways are Cell adhesion\_Cell-matrix glycoconjugates. GO annotations related to this gene include carbohydrate binding. An important paralog of this gene is LGALS9.

#### For Research Use Only

Thank you for your recent purchase.  
 If you would like to learn more about antibodies, please visit [www.elabscience.com](http://www.elabscience.com).

**Focus on your research  
 Service for life science**

Applications: WB-Western Blot IHC-Immunohistochemistry IF-Immunofluorescence IP-Immunoprecipitation FC-Flow cytometry ChIP-Chromatin Immunoprecipitation Reactivity: H-Human R-Rat M-Mouse Mk-Monkey Dg-Dog Ch-Chicken Hm-Hamster Rb-Rabbit Sh-Sheep Pg-Pig Z-Zebrafish X-Xenopus C-Cow.