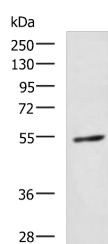


## GBA Polyclonal Antibody

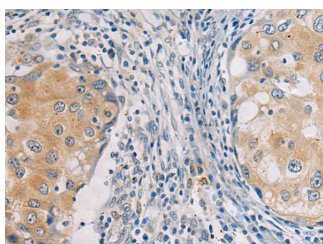
<b>Catalog No.</b>	E-AB-19899	<b>Reactivity</b>	H,M
<b>Storage</b>	Store at -20°C. Avoid freeze / thaw cycles.	<b>Host</b>	Rabbit
<b>Applications</b>	WB,IHC,ELISA	<b>Isotype</b>	IgG

**Note:** Centrifuge before opening to ensure complete recovery of vial contents.

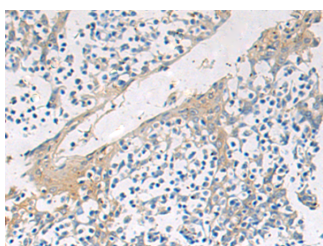
### Images



Western blot analysis of 231 cell lysate using GBA Polyclonal Antibody at dilution of 1:1350



Immunohistochemistry of paraffin-embedded Human breast cancer tissue using GBA Polyclonal Antibody at dilution of 1:55(x200)



Immunohistochemistry of paraffin-embedded Human tonsil tissue using GBA Polyclonal Antibody at dilution of 1:55(x200)

### Immunogen Information

<b>Immunogen</b>	Synthetic peptide of human GBA
<b>Gene Accession</b>	NP000148
<b>Swissprot</b>	P04062
<b>Synonyms</b>	GBA1,GC,GCCase,GCB,GLCM,Glucosidase beta,Glucosidase, beta, acid,Imiglucerase

### Product Information

<b>Calculated MW</b>	60 kDa
<b>Observed MW</b>	Refer to figures
<b>Buffer</b>	PBS with 0.05% NaN <sub>3</sub> and 40% Glycerol,pH7.4
<b>Purify</b>	Antigen affinity purification
<b>Dilution</b>	WB 1:500-1:2000, IHC 1:50-1:100, ELISA 1:5000-1:10000

### Background

This gene encodes a lysosomal membrane protein that cleaves the beta-glucosidic linkage of glycosylceramide, an intermediate in glycolipid metabolism. Mutations in this gene cause Gaucher disease, a lysosomal storage disease characterized by an accumulation of glucocerebrosides. A related pseudogene is approximately 12 kb downstream of this gene on chromosome 1. Alternative splicing results in multiple transcript variants.

#### For Research Use Only

Thank you for your recent purchase.  
 If you would like to learn more about antibodies, please visit [www.elabscience.com](http://www.elabscience.com).

**Focus on your research  
 Service for life science**

Applications:WB-Western Blot IHC-Immunohistochemistry IF-Immunofluorescence IP-Immunoprecipitation FC-Flow cytometry ChIP-Chromatin Immunoprecipitation Reactivity: H-Human R-Rat M-Mouse Mk-Monkey Dg-Dog Ch-Chicken Hm-Hamster Rb-Rabbit Sh-Sheep Pg-Pig Z-Zebrafish X-Xenopus C-Cow.