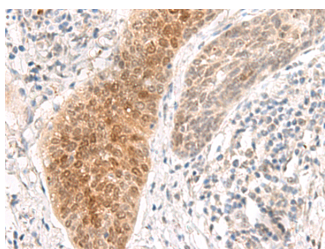


## GHDC Polyclonal Antibody

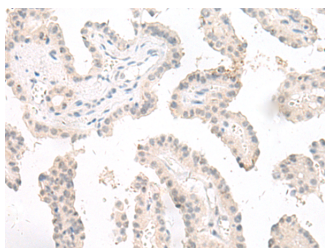
<b>Catalog No.</b>	E-AB-19908	<b>Reactivity</b>	H
<b>Storage</b>	Store at -20°C. Avoid freeze / thaw cycles.	<b>Host</b>	Rabbit
<b>Applications</b>	IHC,ELISA	<b>Isotype</b>	IgG

**Note:** Centrifuge before opening to ensure complete recovery of vial contents.

### Images



Immunohistochemistry of paraffin-embedded Human esophagus cancer tissue using GHDC Polyclonal Antibody at dilution of 1:90(×200)



Immunohistochemistry of paraffin-embedded Human thyroid cancer tissue using GHDC Polyclonal Antibody at dilution of 1:90(×200)

### Immunogen Information

<b>Immunogen</b>	Synthetic peptide of human GHDC
<b>Gene Accession</b>	NP115873
<b>Swissprot</b>	Q8N2G8
<b>Synonyms</b>	D11LGP1E,D11lgp1e like,GH3 domain containing,GHDC,GHDC,Homolog of mouse LGP1,LGP1

### Product Information

<b>Buffer</b>	PBS with 0.05% NaN3 and 40% Glycerol,pH7.4
<b>Purify</b>	Antigen affinity purification
<b>Dilution</b>	IHC 1:50-1:300, ELISA 1:5000-1:10000

### Background

GHDC, also known as LGP1, is a GH3 domain-containing protein that is highly expressed in normal mammary tissues and mammary tumors. GHDC is primarily located in the nuclear envelope. In mouse, its gene is located on chromosome 11 adjacent to the STAT3/5 locus. Little is known of the function of this protein.

#### For Research Use Only

Thank you for your recent purchase.  
 If you would like to learn more about antibodies, please visit [www.elabscience.com](http://www.elabscience.com).

**Focus on your research  
 Service for life science**

Applications:WB-Western Blot IHC-Immunohistochemistry IF-Immunofluorescence IP-Immunoprecipitation FC-Flow cytometry ChIP-Chromatin Immunoprecipitation Reactivity: H-Human R-Rat M-Mouse Mk-Monkey Dg-Dog Ch-Chicken Hm-Hamster Rb-Rabbit Sh-Sheep Pg-Pig Z-Zebrafish X-Xenopus C-Cow.