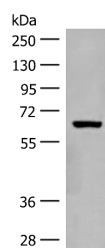


GLS2 Polyclonal Antibody

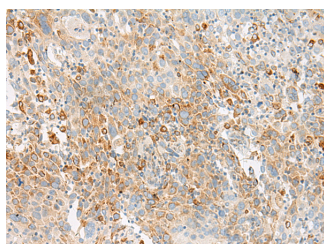
Catalog No.	E-AB-19912	Reactivity	H,M,R
Storage	Store at -20°C. Avoid freeze / thaw cycles.	Host	Rabbit
Applications	WB,IHC,ELISA	Isotype	IgG

Note: Centrifuge before opening to ensure complete recovery of vial contents.

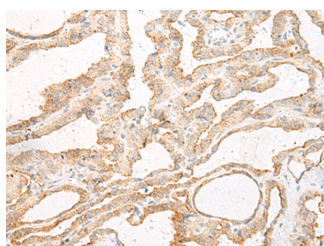
Images



Western blot analysis of Mouse liver tissue lysate using GLS2 Polyclonal Antibody at dilution of 1:400



Immunohistochemistry of paraffin-embedded Human cervical cancer tissue using GLS2 Polyclonal Antibody at dilution of 1:60(x200)



Immunohistochemistry of paraffin-embedded Human thyroid cancer tissue using GLS2 Polyclonal Antibody at dilution of 1:60(x200)

Immunogen Information

Immunogen	Synthetic peptide of human GLS2
Gene Accession	NP037399
Swissprot	Q9UI32
Synonyms	GA, GLS, GlS2, GLSL, GA, mitochondrial, phosphate activated glutaminase

Product Information

Calculated MW	66 kDa
Observed MW	Refer to figures
Buffer	PBS with 0.05% NaN3 and 40% Glycerol, pH7.4
Purify	Antigen affinity purification
Dilution	WB 1:500-1:2000, IHC 1:40-1:200, ELISA 1:5000-1:10000

Background

The protein encoded by this gene is a mitochondrial phosphate-activated glutaminase that catalyzes the hydrolysis of glutamine to stoichiometric amounts of glutamate and ammonia. Originally thought to be liver-specific, this protein has been found in other tissues as well. Alternative splicing results in multiple transcript variants that encode different isoforms.

For Research Use Only

Thank you for your recent purchase.
 If you would like to learn more about antibodies, please visit www.elabscience.com.

**Focus on your research
 Service for life science**

Applications: WB-Western Blot IHC-Immunohistochemistry IF-Immunofluorescence IP-Immunoprecipitation FC-Flow cytometry ChIP-Chromatin Immunoprecipitation Reactivity: H-Human R-Rat M-Mouse Mk-Monkey Dg-Dog Ch-Chicken Hm-Hamster Rb-Rabbit Sh-Sheep Pg-Pig Z-Zebrafish X-Xenopus C-Cow.