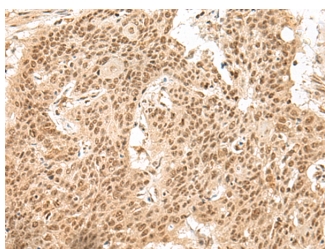


## GMEB2 Polyclonal Antibody

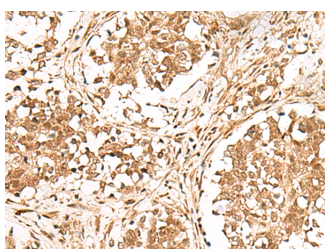
<b>Catalog No.</b>	E-AB-19918	<b>Reactivity</b>	H,M,R
<b>Storage</b>	Store at -20°C. Avoid freeze / thaw cycles.	<b>Host</b>	Rabbit
<b>Applications</b>	IHC,ELISA	<b>Isotype</b>	IgG

**Note:** Centrifuge before opening to ensure complete recovery of vial contents.

### Images



Immunohistochemistry of paraffin-embedded Human esophagus cancer tissue using GMEB2 Polyclonal Antibody at dilution of 1:30(×200)



Immunohistochemistry of paraffin-embedded Human lung cancer tissue using GMEB2 Polyclonal Antibody at dilution of 1:30(×200)

### Immunogen Information

<b>Immunogen</b>	Synthetic peptide of human GMEB2
<b>Gene Accession</b>	NP036516
<b>Swissprot</b>	Q9UKD1
<b>Synonyms</b>	GMEB2,GMEB 2,GMEB-2,Gmeb2,GMEB2,KIAA1269,P79PIF,PIF p79,PIF79,RP4 663D7.1

### Product Information

<b>Buffer</b>	PBS with 0.05% NaN3 and 40% Glycerol,pH7.4
<b>Purify</b>	Antigen affinity purification
<b>Dilution</b>	IHC 1:30-1:150, ELISA 1:5000-1:10000

### Background

This gene is a member of KDWK gene family. The product of this gene associates with GMEB1 protein, and the complex is essential for parvovirus DNA replication. Study of rat homolog implicates the role of this gene in modulation of transactivation by the glucocorticoid receptor bound to glucocorticoid response elements. This gene appears to use multiple polyadenylation sites.

#### For Research Use Only

Thank you for your recent purchase.  
 If you would like to learn more about antibodies, please visit [www.elabscience.com](http://www.elabscience.com).

**Focus on your research  
 Service for life science**

Applications:WB-Western Blot IHC-Immunohistochemistry IF-Immunofluorescence IP-Immunoprecipitation FC-Flow cytometry ChIP-  
 Chromatin Immunoprecipitation Reactivity: H-Human R-Rat M-Mouse Mk-Monkey Dg-Dog Ch-Chicken Hm-Hamster Rb-Rabbit Sh-  
 Sheep Pg-Pig Z-Zebrafish X-Xenopus C-Cow.