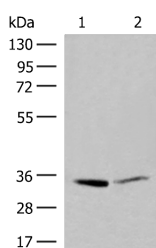


LDHA Polyclonal Antibody

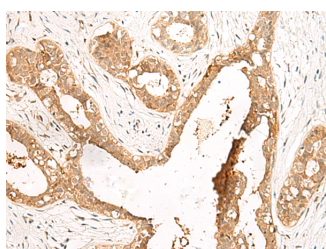
Catalog No.	E-AB-19937	Reactivity	H,M,R
Storage	Store at -20°C. Avoid freeze / thaw cycles.	Host	Rabbit
Applications	WB,IHC,ELISA	Isotype	IgG

Note: Centrifuge before opening to ensure complete recovery of vial contents.

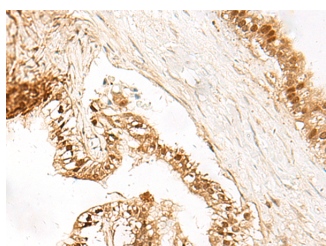
Images



Western blot analysis of A375 and Hela cell lysates using LDHA Polyclonal Antibody at dilution of 1:400



Immunohistochemistry of paraffin-embedded Human breast cancer tissue using LDHA Polyclonal Antibody at dilution of 1:40(×200)



Immunohistochemistry of paraffin-embedded Human liver cancer tissue using LDHA Polyclonal Antibody at dilution of 1:40(×200)

Immunogen Information

Immunogen	Synthetic peptide of human LDHA
Gene Accession	NP005557
Swissprot	P00338
Synonyms	LDH M,LDH muscle subunit,LDH1,LDH5,LDHA,PIG 19,Renal carcinoma antigen NY-REN-59

Product Information

Calculated MW	37 kDa
Observed MW	Refer to figures
Buffer	PBS with 0.05% NaN ₃ and 40% Glycerol,pH7.4
Purify	Antigen affinity purification
Dilution	WB 1:500-1:2000, IHC 1:30-1:150, ELISA 1:5000-1:10000

Background

LDHA,also named as LDH-M and NY-REN-59,is an enzyme which catalyzes the inter-conversion of pyruvate and L-lactate with concomitant inter-conversion of NADH and NAD⁺. LDHA is found in most somatic tissues,though predominantly in muscle tissue and tumours,and belongs to the lactate dehydrogenase family. It has long been known that many human cancers have higher LDHA levels compared to normal tissues. It has also been shown that LDHA plays an important role in the development,invasion and metastasis of malignancies. Mutations in LDHA have been linked to exertional myoglobinuria. LDHA has some isoforms with MW 26-40 kDa.

For Research Use Only

Thank you for your recent purchase.
 If you would like to learn more about antibodies,please visit www.elabscience.com.

**Focus on your research
 Service for life science**

Applications:WB-Western Blot IHC-Immunohistochemistry IF-Immunofluorescence IP-Immunoprecipitation FC-Flow cytometry ChIP-Chromatin Immunoprecipitation Reactivity: H-Human R-Rat M-Mouse Mk-Monkey Dg-Dog Ch-Chicken Hm-Hamster Rb-Rabbit Sh-Sheep Pg-Pig Z-Zebrafish X-Xenopus C-Cow.