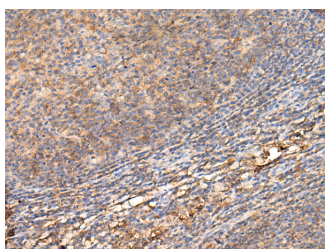


ADGRA1 Polyclonal Antibody

Catalog No.	E-AB-19951	Reactivity	H,M
Storage	Store at -20°C. Avoid freeze / thaw cycles.	Host	Rabbit
Applications	IHC,ELISA	Isotype	IgG

Note: Centrifuge before opening to ensure complete recovery of vial contents.

Images



Immunohistochemistry of paraffin-embedded Human tonsil tissue using ADGRA1 Polyclonal Antibody at dilution of 1:70(×200)

Immunogen Information

Immunogen	Synthetic peptide of human ADGRA1
Gene Accession	XP005252752
Swissprot	Q86SQ6
Synonyms	G protein coupled receptor 123,GP123,GPR123,KIAA1828,Probable G-protein coupled receptor 123

Product Information

Buffer	PBS with 0.05% NaN ₃ and 40% Glycerol,pH7.4
Purify	Antigen affinity purification
Dilution	IHC 1:50-1:300, ELISA 1:5000-1:10000

Background

This gene encodes a protein that belongs to the adhesion family of G-protein-coupled receptors. Members of this family function in several sensory systems and regulate blood pressure, immune responses, food intake and development. A similar protein in rodents is thought to play a role in the regulation of neuronal signaling pathways. Several alternatively spliced transcript variants of this gene have been described, but the full-length nature of some of these variants has not been determined.

For Research Use Only

Thank you for your recent purchase.
 If you would like to learn more about antibodies, please visit www.elabscience.com.

**Focus on your research
 Service for life science**

Applications:WB-Western Blot IHC-Immunohistochemistry IF-Immunofluorescence IP-Immunoprecipitation FC-Flow cytometry ChIP-Chromatin Immunoprecipitation Reactivity: H-Human R-Rat M-Mouse Mk-Monkey Dg-Dog Ch-Chicken Hm-Hamster Rb-Rabbit Sh-Sheep Pg-Pig Z-Zebrafish X-Xenopus C-Cow.