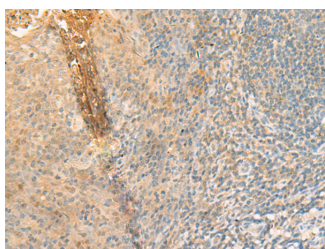


GPT2 Polyclonal Antibody

Catalog No.	E-AB-19961	Reactivity	H,M
Storage	Store at -20°C. Avoid freeze / thaw cycles.	Host	Rabbit
Applications	IHC,ELISA	Isotype	IgG

Note: Centrifuge before opening to ensure complete recovery of vial contents.

Images



Immunohistochemistry of paraffin-embedded Human tonsil tissue using GPT2 Polyclonal Antibody at dilution of 1:70(×200)

Immunogen Information

Immunogen	Synthetic peptide of human GPT2
Gene Accession	NP597700
Swissprot	Q8TD30
Synonyms	AAT2,ALAT2,ALT2,Glutamic--pyruvic transaminase 2,GPT 2,gpt2

Product Information

Buffer	PBS with 0.05% NaN ₃ and 40% Glycerol,pH7.4
Purify	Antigen affinity purification
Dilution	IHC 1:25-1:100, ELISA 1:5000-1:10000

Background

This gene encodes a mitochondrial alanine transaminase, a pyridoxal enzyme that catalyzes the reversible transamination between alanine and 2-oxoglutarate to generate pyruvate and glutamate. Alanine transaminases play roles in gluconeogenesis and amino acid metabolism in many tissues including skeletal muscle, kidney, and liver. Activating transcription factor 4 upregulates this gene under metabolic stress conditions in hepatocyte cell lines. A loss of function mutation in this gene has been associated with developmental encephalopathy. Alternative splicing results in multiple transcript variants.

For Research Use Only

Thank you for your recent purchase.
 If you would like to learn more about antibodies, please visit www.elabscience.com.

**Focus on your research
 Service for life science**

Applications:WB-Western Blot IHC-Immunohistochemistry IF-Immunofluorescence IP-Immunoprecipitation FC-Flow cytometry ChIP-Chromatin Immunoprecipitation Reactivity: H-Human R-Rat M-Mouse Mk-Monkey Dg-Dog Ch-Chicken Hm-Hamster Rb-Rabbit Sh-Sheep Pg-Pig Z-Zebrafish X-Xenopus C-Cow.