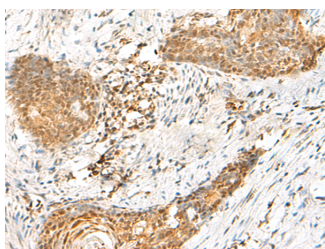


HMBOX1 Polyclonal Antibody

| | | | |
|---------------------|---|-------------------|--------|
| Catalog No. | E-AB-19993 | Reactivity | H,M |
| Storage | Store at -20°C. Avoid freeze / thaw cycles. | Host | Rabbit |
| Applications | IHC,ELISA | Isotype | IgG |

Note: Centrifuge before opening to ensure complete recovery of vial contents.

Images



Immunohistochemistry of paraffin-embedded Human esophagus cancer tissue using HMBOX1 Polyclonal Antibody at dilution of 1:60(×200)

Immunogen Information

| | |
|-----------------------|---|
| Immunogen | Synthetic peptide of human HMBOX1 |
| Gene Accession | NP078843 |
| Swissprot | Q6NT76 |
| Synonyms | FLJ21616,HMBOX1,HMBOX1A,HMBX1,HNF1LA, homeobox-containing protein PBHNF,PBHNF |

Product Information

| | |
|-----------------|--|
| Buffer | PBS with 0.05% NaN3 and 40% Glycerol,pH7.4 |
| Purify | Antigen affinity purification |
| Dilution | IHC 1:30-1:150, ELISA 1:5000-1:10000 |

Background

Transcription factor. Isoform 1 acts as a transcriptional repressor. Isoform 4 has very low activity as a transcriptional repressor.

For Research Use Only

Thank you for your recent purchase.
 If you would like to learn more about antibodies, please visit www.elabscience.com.

**Focus on your research
 Service for life science**

Applications:WB-Western Blot IHC-Immunohistochemistry IF-Immunofluorescence IP-Immunoprecipitation FC-Flow cytometry ChIP-Chromatin Immunoprecipitation Reactivity: H-Human R-Rat M-Mouse Mk-Monkey Dg-Dog Ch-Chicken Hm-Hamster Rb-Rabbit Sh-Sheep Pg-Pig Z-Zebrafish X-Xenopus C-Cow.