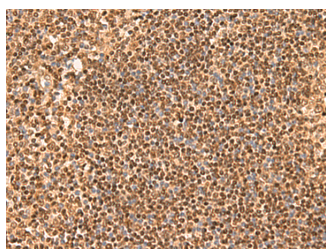


SIX6 Polyclonal Antibody

Catalog No.	E-AB-19997	Reactivity	H,M
Storage	Store at -20°C. Avoid freeze / thaw cycles.	Host	Rabbit
Applications	IHC,ELISA	Isotype	IgG

Note: Centrifuge before opening to ensure complete recovery of vial contents.

Images



Immunohistochemistry of paraffin-embedded Human tonsil tissue using SIX6 Polyclonal Antibody at dilution of 1:50(×200)

Immunogen Information

Immunogen	Synthetic peptide of human SIX6
Gene Accession	NP031400
Swissprot	O95475
Synonyms	MCOPCT 2,MCOPCT2,Optic homeobox 2,OPTX 2,OPTX2,SIX 6,Six 9,SIX6,Six9

Product Information

Buffer	PBS with 0.05% NaN ₃ and 40% Glycerol,pH7.4
Purify	Antigen affinity purification
Dilution	IHC 1:50-1:300, ELISA 1:5000-1:10000

Background

The protein encoded by this gene is a homeobox protein that is similar to the Drosophila 'sine oculis' gene product. This gene is found in a cluster of related genes on chromosome 14 and is thought to be involved in eye development. Defects in this gene are a cause of isolated microphthalmia with cataract type 2 (MCOPCT2).SIX6 (SIX Homeobox 6) is a Protein Coding gene. Diseases associated with SIX6 include Optic Disc Anomalies With Retinal And/Or Macular Dystrophy and Six6-Related Eye Disorders. Among its related pathways are Ectoderm Differentiation. GO annotations related to this gene include transcriptional activator activity, RNA polymerase II distal enhancer sequence-specific binding. An important paralog of this gene is SIX3.

For Research Use Only

Thank you for your recent purchase.
 If you would like to learn more about antibodies, please visit www.elabscience.com.

**Focus on your research
 Service for life science**

Applications:WB-Western Blot IHC-Immunohistochemistry IF-Immunofluorescence IP-Immunoprecipitation FC-Flow cytometry ChIP-Chromatin Immunoprecipitation Reactivity: H-Human R-Rat M-Mouse Mk-Monkey Dg-Dog Ch-Chicken Hm-Hamster Rb-Rabbit Sh-Sheep Pg-Pig Z-Zebrafish X-Xenopus C-Cow.