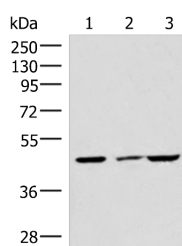


## IP6K2 Polyclonal Antibody

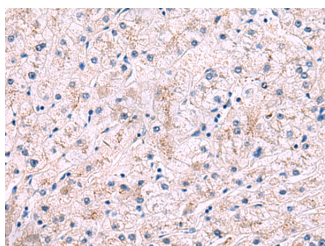
<b>Catalog No.</b>	E-AB-52024	<b>Reactivity</b>	H,M,R
<b>Storage</b>	Store at -20°C. Avoid freeze / thaw cycles.	<b>Host</b>	Rabbit
<b>Applications</b>	WB,IHC,ELISA	<b>Isotype</b>	IgG

**Note:** Centrifuge before opening to ensure complete recovery of vial contents.

### Images



Western blot analysis of HUVEC cell Mouse brain tissue and A549 cell lysates using IP6K2 Polyclonal Antibody at dilution of 1:550



Immunohistochemistry of paraffin-embedded Human liver cancer tissue using IP6K2 Polyclonal Antibody at dilution of 1:50(×200)

### Immunogen Information

<b>Immunogen</b>	Synthetic peptide of human IP6K2
<b>Gene Accession</b>	NP057375
<b>Swissprot</b>	Q9UHH9
<b>Synonyms</b>	IHPK 2,IHPK2,Ip6k2,IP6K2,KIAA0263,PiUS

### Product Information

<b>Calculated MW</b>	49 kDa
<b>Observed MW</b>	Refer to figures
<b>Buffer</b>	PBS with 0.05% NaN <sub>3</sub> and 40% Glycerol,pH7.4
<b>Purify</b>	Antigen affinity purification
<b>Dilution</b>	WB 1:500-1:2000, IHC 1:30-1:150, ELISA 1:5000-1:10000

### Background

This gene encodes a protein that belongs to the inositol phosphokinase (IPK) family. This protein is likely responsible for the conversion of inositol hexakisphosphate (InsP<sub>6</sub>) to diphosphoinositol pentakisphosphate (InsP<sub>7</sub>/PP-InsP<sub>5</sub>). It may also convert 1,3,4,5,6-pentakisphosphate (InsP<sub>5</sub>) to PP-InsP<sub>4</sub> and affect the growth suppressive and apoptotic activities of interferon-beta in some ovarian cancers. Alternative splicing results in multiple transcript variants encoding different isoforms.

#### For Research Use Only

Thank you for your recent purchase.  
 If you would like to learn more about antibodies, please visit [www.elabscience.com](http://www.elabscience.com).

**Focus on your research  
 Service for life science**

Applications:WB-Western Blot IHC-Immunohistochemistry IF-Immunofluorescence IP-Immunoprecipitation FC-Flow cytometry ChIP-Chromatin Immunoprecipitation Reactivity: H-Human R-Rat M-Mouse Mk-Monkey Dg-Dog Ch-Chicken Hm-Hamster Rb-Rabbit Sh-Sheep Pg-Pig Z-Zebrafish X-Xenopus C-Cow.