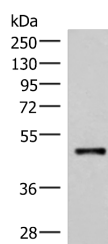


IRX2 Polyclonal Antibody

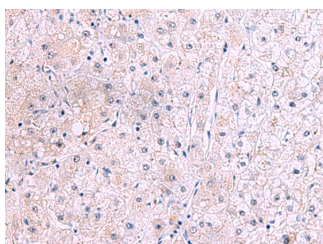
Catalog No.	E-AB-52041	Reactivity	H,M
Storage	Store at -20°C. Avoid freeze / thaw cycles.	Host	Rabbit
Applications	WB,IHC,ELISA	Isotype	IgG

Note: Centrifuge before opening to ensure complete recovery of vial contents.

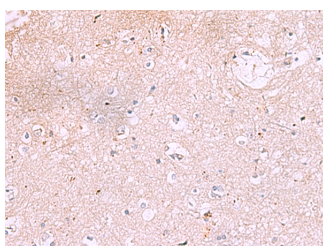
Images



Western blot analysis of Mouse lung tissue lysate using IRX2 Polyclonal Antibody at dilution of 1:300



Immunohistochemistry of paraffin-embedded Human liver cancer tissue using IRX2 Polyclonal Antibody at dilution of 1:45(x200)



Immunohistochemistry of paraffin-embedded Human brain tissue using IRX2 Polyclonal Antibody at dilution of 1:45(x200)

Immunogen Information

Immunogen	Synthetic peptide of human IRX2
Gene Accession	NP150366
Swissprot	Q9BZI1
Synonyms	Homeodomain protein IRXA2,Iroquois homeobox 2,Iroquois homeobox protein 2,Iroquois-class homeodomain protein irx-2,IRX 2,irx2,IRX2,IrxA2

Product Information

Calculated MW	49 kDa
Observed MW	Refer to figures
Buffer	PBS with 0.05% NaN ₃ and 40% Glycerol,pH7.4
Purify	Antigen affinity purification
Dilution	WB 1:500-1:2000, IHC 1:30-1:150, ELISA 1:5000-1:10000

Background

IRX2 is a member of the Iroquois homeobox gene family. Members of this family appear to play multiple roles during pattern formation of vertebrate embryos. IRX2 (Iroquois Homeobox 2) is a Protein Coding gene. Diseases associated with IRX2 include Kidney Clear Cell Sarcoma. GO annotations related to this gene include sequence-specific DNA binding. An important paralog of this gene is IRX5.

For Research Use Only

Thank you for your recent purchase.
 If you would like to learn more about antibodies, please visit www.elabscience.com.

**Focus on your research
 Service for life science**

Applications:WB-Western Blot IHC-Immunohistochemistry IF-Immunofluorescence IP-Immunoprecipitation FC-Flow cytometry ChIP-Chromatin Immunoprecipitation Reactivity: H-Human R-Rat M-Mouse Mk-Monkey Dg-Dog Ch-Chicken Hm-Hamster Rb-Rabbit Sh-Sheep Pg-Pig Z-Zebrafish X-Xenopus C-Cow.