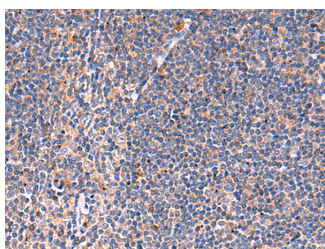


## KLK9 Polyclonal Antibody

<b>Catalog No.</b>	E-AB-52063	<b>Reactivity</b>	H
<b>Storage</b>	Store at -20°C. Avoid freeze / thaw cycles.	<b>Host</b>	Rabbit
<b>Applications</b>	IHC,ELISA	<b>Isotype</b>	IgG

**Note:** Centrifuge before opening to ensure complete recovery of vial contents.

### Images



Immunohistochemistry of paraffin-embedded Human tonsil tissue using KLK9 Polyclonal Antibody at dilution of 1:50(×200)

### Immunogen Information

<b>Immunogen</b>	Synthetic peptide of human KLK9
<b>Gene Accession</b>	NP036447
<b>Swissprot</b>	Q9UKQ9
<b>Synonyms</b>	Kallikrein8,Kallikrein9,KLK 8,KLK 9,KLK L3,KLK-L3,KLK8,KLK9,KLK9,KLKL 3,KLKL3

### Product Information

<b>Buffer</b>	PBS with 0.05% NaN3 and 40% Glycerol,pH7.4
<b>Purify</b>	Antigen affinity purification
<b>Dilution</b>	IHC 1:40-1:200, ELISA 1:5000-1:10000

### Background

The protein encoded by this gene is a kallikrein-related serine protease. This gene is activated by steroid hormones in a human breast cancer cell line, making it a good marker for cancer detection. The encoded protein is found primarily in the cytoplasm.

#### For Research Use Only

Thank you for your recent purchase.

If you would like to learn more about antibodies, please visit [www.elabscience.com](http://www.elabscience.com).

**Focus on your research  
 Service for life science**

Applications:WB-Western Blot IHC-Immunohistochemistry IF-Immunofluorescence IP-Immunoprecipitation FC-Flow cytometry ChIP-Chromatin Immunoprecipitation Reactivity: H-Human R-Rat M-Mouse Mk-Monkey Dg-Dog Ch-Chicken Hm-Hamster Rb-Rabbit Sh-Sheep Pg-Pig Z-Zebrafish X-Xenopus C-Cow.