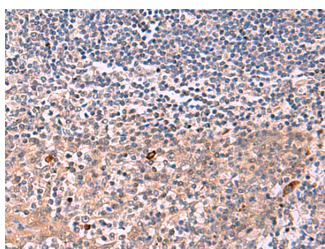


## IFNA1/IFNA13 Polyclonal Antibody

<b>Catalog No.</b>	E-AB-52067	<b>Reactivity</b>	H
<b>Storage</b>	Store at -20°C. Avoid freeze / thaw cycles.	<b>Host</b>	Rabbit
<b>Applications</b>	IHC,ELISA	<b>Isotype</b>	IgG

**Note:** Centrifuge before opening to ensure complete recovery of vial contents.

### Images



Immunohistochemistry of paraffin-embedded Human tonsil tissue using IFNA1:IFNA13 Polyclonal Antibody at dilution of 1:35(×200)

### Immunogen Information

<b>Immunogen</b>	Synthetic peptide of human IFNA1/IFNA13
<b>Gene Accession</b>	NP008831
<b>Swissprot</b>	P01562
<b>Synonyms</b>	IFL,IFN alpha,IFN alpha 1b,IFN alphaD,IFN,IFNA1,IFNA1,IFNA13,alpha 13,LeIF D

### Product Information

<b>Buffer</b>	PBS with 0.05% NaN <sub>3</sub> and 40% Glycerol,pH7.4
<b>Purify</b>	Antigen affinity purification
<b>Dilution</b>	IHC 1:30-1:150, ELISA 1:5000-1:10000

### Background

IFNA1 (interferon-alpha) is a member of the Type I IFN (1) family best known for their antiviral activity. It is a key cytokine regulating the activity of B cells,T-helper cells (Th cells),cDCs and natural killer cells (NK cells). Interferon-alpha induces B cell maturation into plasma cells and immunoglobulin production. Interferon-alpha plays an important role in the pathogenesis of systemic lupus erythematosus (SLE). Interferon-alpha was the first cytokine to show clinical benefit in the treatment of certain types of cancer,including melanoma,chronic myelogenous leukemia,and renal cancer.

#### For Research Use Only

Thank you for your recent purchase.  
 If you would like to learn more about antibodies,please visit [www.elabscience.com](http://www.elabscience.com).

**Focus on your research  
 Service for life science**

Applications:WB-Western Blot IHC-Immunohistochemistry IF-Immunofluorescence IP-Immunoprecipitation FC-Flow cytometry ChIP-Chromatin Immunoprecipitation Reactivity: H-Human R-Rat M-Mouse Mk-Monkey Dg-Dog Ch-Chicken Hm-Hamster Rb-Rabbit Sh-Sheep Pg-Pig Z-Zebrafish X-Xenopus C-Cow.