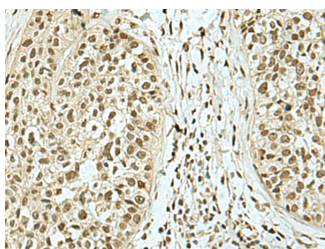


KHSRP Polyclonal Antibody

| | | | |
|---------------------|---|-------------------|--------|
| Catalog No. | E-AB-52097 | Reactivity | H,M,R |
| Storage | Store at -20°C. Avoid freeze / thaw cycles. | Host | Rabbit |
| Applications | IHC,ELISA | Isotype | IgG |

Note: Centrifuge before opening to ensure complete recovery of vial contents.

Images



Immunohistochemistry of paraffin-embedded Human esophagus cancer tissue using KHSRP Polyclonal Antibody at dilution of 1:40(×200)

Immunogen Information

| | |
|-----------------------|---|
| Immunogen | Synthetic peptide of human KHSRP |
| Gene Accession | NP003676 |
| Swissprot | Q92945 |
| Synonyms | FBP2,FUBP2,FUBP2,FUSE binding protein 2,FUSE-binding protein 2,KHSRP,KSrp,p75 |

Product Information

| | |
|-----------------|--|
| Buffer | PBS with 0.05% NaN3 and 40% Glycerol,pH7.4 |
| Purify | Antigen affinity purification |
| Dilution | IHC 1:40-1:200, ELISA 1:5000-1:10000 |

Background

The KHSRP gene encodes a multifunctional RNA-binding protein implicated in a variety of cellular processes, including transcription, alternative pre-mRNA splicing, and mRNA localization. KHSRP (KH-Type Splicing Regulatory Protein) is a Protein Coding gene. Diseases associated with KHSRP include Ataxia, Cerebellar, Cayman Type. Among its related pathways are CDK-mediated phosphorylation and removal of Cdc6 and Gene Expression. GO annotations related to this gene include nucleic acid binding and RNA binding. An important paralog of this gene is FUBP1.

For Research Use Only

Thank you for your recent purchase.
 If you would like to learn more about antibodies, please visit www.elabscience.com.

**Focus on your research
 Service for life science**

Applications:WB-Western Blot IHC-Immunohistochemistry IF-Immunofluorescence IP-Immunoprecipitation FC-Flow cytometry ChIP-Chromatin Immunoprecipitation Reactivity: H-Human R-Rat M-Mouse Mk-Monkey Dg-Dog Ch-Chicken Hm-Hamster Rb-Rabbit Sh-Sheep Pg-Pig Z-Zebrafish X-Xenopus C-Cow.