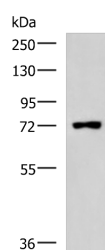


PUM3 Polyclonal Antibody

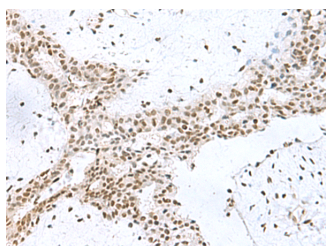
Catalog No.	E-AB-52099	Reactivity	H
Storage	Store at -20°C. Avoid freeze / thaw cycles.	Host	Rabbit
Applications	WB,IHC,ELISA	Isotype	IgG

Note: Centrifuge before opening to ensure complete recovery of vial contents.

Images



Western blot analysis of Raji cell lysate using PUM3 Polyclonal Antibody at dilution of 1:800



Immunohistochemistry of paraffin-embedded Human breast cancer tissue using PUM3 Polyclonal Antibody at dilution of 1:80(x200)

Immunogen Information

Immunogen	Synthetic peptide of human PUM3
Gene Accession	NP055693
Swissprot	Q15397
Synonyms	HA-8,HLA HA8,HLA-HA8,hPUF-A,K0020,Kiaa0020,KIAA0020 protein,MGC8749,PUF 6,PUF6,XTP5

Product Information

Calculated MW	74 kDa
Observed MW	Refer to figures
Buffer	PBS with 0.05% NaN3 and 40% Glycerol,pH7.4
Purify	Antigen affinity purification
Dilution	WB 1:1000-1:5000, IHC 1:50-1:200, ELISA 1:5000-1:10000

Background

Inhibits the poly(ADP-ribosyl)ation activity of PARP1 and the degradation of PARP1 by CASP3 following genotoxic stress (PubMed:21266351). Binds to double-stranded RNA or DNA without sequence specificity (PubMed:25512524). Involved in development of the eye and of primordial germ cells (By similarity).

For Research Use Only

Thank you for your recent purchase.
 If you would like to learn more about antibodies, please visit www.elabscience.com.

**Focus on your research
 Service for life science**

Applications:WB-Western Blot IHC-Immunohistochemistry IF-Immunofluorescence IP-Immunoprecipitation FC-Flow cytometry ChIP-Chromatin Immunoprecipitation Reactivity: H-Human R-Rat M-Mouse Mk-Monkey Dg-Dog Ch-Chicken Hm-Hamster Rb-Rabbit Sh-Sheep Pg-Pig Z-Zebrafish X-Xenopus C-Cow.