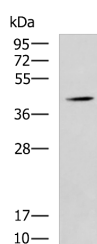


## SPI1 Polyclonal Antibody

<b>Catalog No.</b>	E-AB-52113	<b>Reactivity</b>	H,M,R
<b>Storage</b>	Store at -20°C. Avoid freeze / thaw cycles.	<b>Host</b>	Rabbit
<b>Applications</b>	WB,ELISA	<b>Isotype</b>	IgG

**Note:** Centrifuge before opening to ensure complete recovery of vial contents.

### Images



Western blot analysis of Mouse liver tissue lysate using SPI1 Polyclonal Antibody at dilution of 1:1600

### Immunogen Information

<b>Immunogen</b>	Synthetic peptide of human SPI1
<b>Gene Accession</b>	NP003111
<b>Swissprot</b>	P17947
<b>Synonyms</b>	SPI 1,SPI 1 proto oncogene,SPI A,Spi1,SPI1,Transcription factor PU.1

### Product Information

<b>Calculated MW</b>	31 kDa
<b>Observed MW</b>	Refer to figures
<b>Buffer</b>	PBS with 0.05% NaN <sub>3</sub> and 40% Glycerol,pH7.4
<b>Purify</b>	Antigen affinity purification
<b>Dilution</b>	WB 1:500-1:2000, ELISA 1:5000-1:10000

### Background

SPI1 encodes an ETS-domain transcription factor that activates gene expression during myeloid and B-lymphoid cell development. The nuclear protein binds to a purine-rich sequence known as the PU-box found near the promoters of target genes, and regulates their expression in coordination with other transcription factors and cofactors. The protein can also regulate alternative splicing of target genes. Multiple transcript variants encoding different isoforms have been found for this gene. SPI1 (Spi-1 Proto-Oncogene) is a Protein Coding gene. Diseases associated with SPI1 include Inflammatory Diarrhea and Interdigitating Dendritic Cell Sarcoma. Among its related pathways are Validated targets of C-MYC transcriptional repression and C-MYB transcription factor network. GO annotations related to this gene include transcription factor activity, sequence-specific DNA binding and RNA binding. An important paralog of this gene is SPIB.

#### For Research Use Only

Thank you for your recent purchase.  
 If you would like to learn more about antibodies, please visit [www.elabscience.com](http://www.elabscience.com).

**Focus on your research  
 Service for life science**

Applications:WB-Western Blot IHC-Immunohistochemistry IF-Immunofluorescence IP-Immunoprecipitation FC-Flow cytometry ChIP-Chromatin Immunoprecipitation Reactivity: H-Human R-Rat M-Mouse Mk-Monkey Dg-Dog Ch-Chicken Hm-Hamster Rb-Rabbit Sh-Sheep Pg-Pig Z-Zebrafish X-Xenopus C-Cow.