

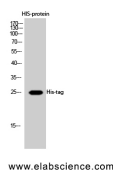
## His-Tag Polyclonal Antibody

**Catalog No.** E-AB-20001  
**Storage** Store at -20°C. Avoid freeze / thaw cycles.  
**Applications** WB,ELISA

**Reactivity**  
**Host** Rabbit  
**Isotype** IgG

**Note:** Centrifuge before opening to ensure complete recovery of vial contents.

### Images



Western Blot analysis of His protein using His-tag Polyclonal Antibody at dilution of 1:2000.

### Immunogen Information

**Immunogen** 6X His synthetic peptide conjugated to KLH.  
**Synonyms** 6 His epitope tag, Hexa His tag, HHHHHH epitope tag, HHHHHH tag, His tag

### Product Information

**Observed MW** 15kDa  
**Buffer** PBS with 0.02% sodium azide, 0.5% protective protein and 50% glycerol, pH7.4  
**Purify** Affinity purification  
**Dilution** WB 1:1000-1:3000, ELISA 1:20000

### Background

Protein tags are protein or peptide sequences located either on the C- or N- terminal of the target protein, which facilitates one or several of the following characteristics: solubility, detection, purification, localization and expression. His tag is often used for affinity purification and binding assays. Expressed His-tagged proteins can be purified and detected easily because the string of histidine residues binds to several types of immobilized metal ions, including nickel, cobalt and copper, under specific buffer conditions. The His tag antibody is a useful tool for monitoring of the His-tagged proteins, and recognizes His-tags placed at N-terminal, C-terminal, and internal regions of fusion proteins expressed in bacteria, insect, and mammalian cells.

#### For Research Use Only

Thank you for your recent purchase.  
If you would like to learn more about antibodies, please visit [www.elabscience.com](http://www.elabscience.com).

#### Focus on your research Service for life science

Applications: WB-Western Blot IHC-Immunohistochemistry IF-Immunofluorescence IP-Immunoprecipitation FC-Flow cytometry ChIP-Chromatin Immunoprecipitation Reactivity: H-Human R-Rat M-Mouse Mk-Monkey Dg-Dog Ch-Chicken Hm-Hamster Rb-Rabbit Sh-Sheep Pg-Pig Z-Zebrafish X-Xenopus C-Cow.