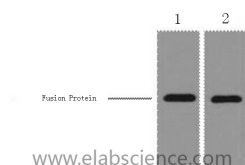


## mCherry-Tag Monoclonal Antibody

|                     |   |                   |       |
|---------------------|---|-------------------|-------|
| <b>Catalog No.</b>  | E-AB-20015                                  | <b>Reactivity</b> |       |
| <b>Storage</b>      | Store at -20°C. Avoid freeze / thaw cycles. | <b>Host</b>       | Mouse |
| <b>Applications</b> | WB  | <b>Isotype</b>    | IgG   |

**Note:** Centrifuge before opening to ensure complete recovery of vial contents.

### Images



Western Blot analysis of 1µg mCherry fusion protein using mCherry-Tag Monoclonal Antibody at dilution of 1) 1:5000, 2) 1:10000.

### Immunogen Information

|                  |                     |
|------------------|---------------------|
| <b>Immunogen</b> | Recombinant Protein |
| <b>Synonyms</b>  | mCherry-Tag         |

### Product Information

|                  |  |
|------------------|--|
| <b>Buffer</b>    | PBS with 0.02% sodium azide and 50% glycerol pH 7.4. |
| <b>Purify</b>    | Protein A purification                               |
| <b>Clone No.</b> | Clone:2B3  |
| <b>Dilution</b>  | WB 1:2000-10000                                      |

### For Research Use Only

Thank you for your recent purchase.

If you would like to learn more about antibodies, please visit [www.elabscience.com](http://www.elabscience.com).

### Focus on your research Service for life science

Applications: WB-Western Blot IHC-Immunohistochemistry IF-Immunofluorescence IP-Immunoprecipitation FC-Flow cytometry ChIP-Chromatin Immunoprecipitation Reactivity: H-Human R-Rat M-Mouse Mk-Monkey Dg-Dog Ch-Chicken Hm-Hamster Rb-Rabbit Sh-Sheep Pg-Pig Z-Zebrafish X-Xenopus C-Cow.