

His-Tag Monoclonal Antibody

Catalog No. E-AB-20026

Note: Centrifuge before opening to ensure complete recovery of vial contents.

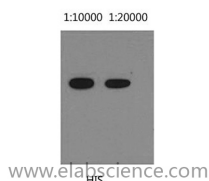
Description

Immunogen	Synthetic Peptide
Host	Mouse
Isotype	IgG
Clone	Clone:2K3
Purification	Protein A purification
Buffer	PBS with 0.02% sodium azide and 50% glycerol pH 7.4.

Applications Recommended Dilution

WB	1:3000-10000
-----------	--------------

Data



Western Blot analysis of His recombinant protein using His-Tag Monoclonal Antibody at dilution of 1) 1:10000, 2) 1:20000.

Preparation & Storage

Storage Store at -20°C. Avoid freeze / thaw cycles.

Background

Protein tags are protein or peptide sequences located either on the C- or N- terminal of the target protein, which facilitates one or several of the following characteristics: solubility, detection, purification, localization and expression. His tag is often used for affinity purification and binding assays. Expressed His-tagged proteins can be purified and detected easily because the string of histidine residues binds to several types of immobilized metal ions, including nickel, cobalt and copper, under specific buffer conditions. The His tag antibody is a useful tool for monitoring of the His-tagged proteins, and recognizes His-tags placed at N-terminal, C-terminal, and internal regions of fusion proteins expressed in bacteria, insect, and mammalian cells.

For Research Use Only