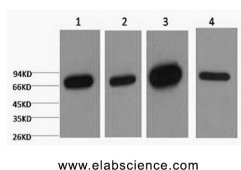


Lamin B1 Monoclonal Antibody

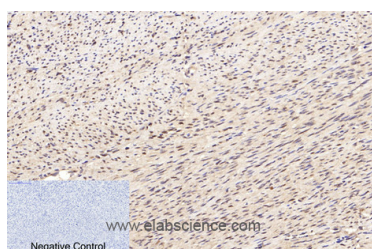
Catalog No.	E-AB-20076	Reactivity	H,M,R
Storage	Store at -20°C. Avoid freeze / thaw cycles.	Host	Mouse
Applications	WB,IHC-p,IF,IP	Isotype	IgG

Note: Centrifuge before opening to ensure complete recovery of vial contents.

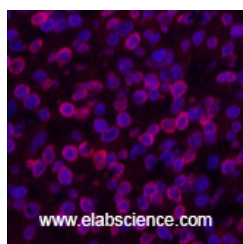
Images



Western Blot analysis of 1) HepG2, 2) 293T, 3) Mouse brain, 4) Rat brain using Lamin B1 Monoclonal Antibody at dilution of 1:5000.



Immunohistochemistry of paraffin-embedded Human uterus tissue using Lamin B1 Monoclonal Antibody at dilution of 1:200.



Immunofluorescence analysis of Human lung cancer tissue using Lamin B1 Monoclonal Antibody at dilution of 1:200.

Immunogen Information

Immunogen	Recombinant Protein
Swissprot	P20700
Synonyms	LMNB1,LMN2,LMNB,Lamin-B1

Product Information

Calculated MW	66kDa
Observed MW	68kDa
Buffer	PBS with 0.02% sodium azide and 50% glycerol pH 7.4.
Purify	Protein A purification
Clone No.	Clone:4K2
Dilution	WB 1:500-1:2000, IHC 1:50-300, IF 1:50-1:200, IP 1:100-1:300

Background

Lamins are components of the nuclear lamina, a fibrous layer on the nucleoplasmic side of the inner nuclear membrane, which is thought to provide a framework for the nuclear envelope and may also interact with chromatin.

For Research Use Only

Thank you for your recent purchase.
 If you would like to learn more about antibodies, please visit www.elabscience.com.

Focus on your research
Service for life science

Applications:WB-Western Blot IHC-Immunohistochemistry IF-Immunofluorescence IP-Immunoprecipitation FC-Flow cytometry ChIP-Chromatin Immunoprecipitation Reactivity: H-Human R-Rat M-Mouse Mk-Monkey Dg-Dog Ch-Chicken Hm-Hamster Rb-Rabbit Sh-Sheep Pg-Pig Z-Zebrafish X-Xenopus C-Cow.