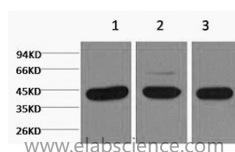


## beta actin Monoclonal Antibody

<b>Catalog No.</b>	E-AB-20092	<b>Reactivity</b>	H,M,R,Mk,Dg
<b>Storage</b>	Store at -20°C. Avoid freeze / thaw cycles.	<b>Host</b>	Mouse
<b>Applications</b>	WB	<b>Isotype</b>	IgG

**Note:** Centrifuge before opening to ensure complete recovery of vial contents.

### Images



Western Blot analysis of 1) HeLa, 2) Mouse brain, 3) Rat brain using beta actin Monoclonal Antibody at dilution of 1:5000.

### Immunogen Information

<b>Immunogen</b>	Synthetic Peptide
<b>Swissprot</b>	P60709
<b>Synonyms</b>	ACTB,Actin,cytoplasmic 1,Beta-actin

### Product Information

<b>Calculated MW</b>	42kDa
<b>Observed MW</b>	43kDa
<b>Buffer</b>	PBS with 0.02% sodium azide and 50% glycerol pH 7.4.
<b>Purify</b>	Protein A purification
<b>Clone No.</b>	Clone:1B6
<b>Dilution</b>	WB 1:500-10000

### Background

Beta actin, also named as ACTB and F-Actin, belongs to the actin family. Actins are highly conserved globular proteins that are involved in various types of cell motility and are ubiquitously expressed in all eukaryotic cells. At least six isoforms of actins are known in mammals and other vertebrates: alpha (ACTC1, cardiac muscle 1), alpha 1 (ACTA1, skeletal muscle) and 2 (ACTA2, aortic smooth muscle), beta (ACTB), gamma 1 (ACTG1) and 2 (ACTG2, enteric smooth muscle). Beta and gamma 1 are two non-muscle actin proteins. Most actins consist of 376aa, while ACTG2 (rich in muscles) has 375aa and ACTG1(found in non-muscle cells) has only 374aa. Beta actin has been widely used as the internal control in RT-PCR and Western Blotting as a 42-kDa protein. However, the 41 kDa cleaved fragment of beta actin can be generated during apoptosis process. This antibody can recognize all the actins.

#### For Research Use Only

Thank you for your recent purchase.  
 If you would like to learn more about antibodies, please visit [www.elabscience.com](http://www.elabscience.com).

**Focus on your research  
 Service for life science**

Applications:WB-Western Blot IHC-Immunohistochemistry IF-Immunofluorescence IP-Immunoprecipitation FC-Flow cytometry ChIP-Chromatin Immunoprecipitation Reactivity: H-Human R-Rat M-Mouse Mk-Monkey Dg-Dog Ch-Chicken Hm-Hamster Rb-Rabbit Sh-Sheep Pg-Pig Z-Zebrafish X-Xenopus C-Cow.