

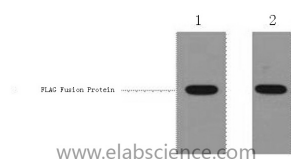
Flag-Tag Polyclonal Antibody

Catalog No. E-AB-20045
Storage Store at -20°C. Avoid freeze / thaw cycles.
Applications WB

Reactivity
Host Rabbit
Isotype IgG

Note: Centrifuge before opening to ensure complete recovery of vial contents.

Images



Western Blot analysis of 1µg Flag fusion protein using Flag-Tag Polyclonal Antibody at dilution of 1:1000.

Immunogen Information

Immunogen Synthetic Peptide
Synonyms DDDDK epitope tag,DDDDK epitope tag,DYKDDDDK epitope tag

Product Information

Buffer PBS with 0.02% sodium azide and 50% glycerol pH 7.4.
Purify Affinity purification
Dilution WB 1:5000-20000

Background

Protein tags are protein or peptide sequences located either on the C- or N- terminal of the target protein, which facilitates one or several of the following characteristics: solubility, detection, purification, localization and expression. The DYKDDDDK(FLAG) peptide has been used extensively as a general tag in expression vectors. This peptide can be expressed and detected with the protein of interest as an amino-terminal or carboxy-terminal fusion. N-terminal FLAG vectors provide an Ek cleavage site for removal of the fusion tag. The FLAG peptide is likely to be located on the surface of a fusion protein because of its hydrophilic nature. As a result, the FLAG peptide is more likely to be accessible to antibodies.

For Research Use Only

Thank you for your recent purchase.
If you would like to learn more about antibodies, please visit www.elabscience.com.

Focus on your research Service for life science

Applications:WB-Western Blot IHC-Immunohistochemistry IF-Immunofluorescence IP-Immunoprecipitation FC-Flow cytometry ChIP-Chromatin Immunoprecipitation Reactivity: H-Human R-Rat M-Mouse Mk-Monkey Dg-Dog Ch-Chicken Hm-Hamster Rb-Rabbit Sh-Sheep Pg-Pig Z-Zebrafish X-Xenopus C-Cow.