

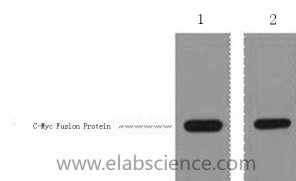
Myc-Tag Polyclonal Antibody

Catalog No. E-AB-20047
Storage Store at -20°C. Avoid freeze / thaw cycles.
Applications WB

Reactivity
Host Rabbit
Isotype IgG

Note: Centrifuge before opening to ensure complete recovery of vial contents.

Images



Western Blot analysis of 1µg C-Myc fusion protein using Myc-Tag Polyclonal Antibody at dilution of 1:1000.

Immunogen Information

Immunogen Synthetic Peptide
Synonyms c Myc,c Myc Epitope Tag,c Myc Tag,Myc Epitope Tag,Myc proto-oncogene protein,Transcription factor p64

Product Information

Buffer PBS with 0.02% sodium azide and 50% glycerol pH 7.4.
Purify Affinity purification
Dilution WB 1:5000-20000

Background

Protein tags are protein or peptide sequences located either on the C- or N- terminal of the target protein, which facilitates one or several of the following characteristics: solubility, detection, purification, localization and expression. The c-Myc tag corresponds to amino acid residues(EQKLISEEDL) of the human c-Myc protein. It can be used for affinity chromatography, then used to separate recombinant, overexpressed protein from wild type protein expressed by the host organism. It can also be used in the isolation of protein complexes with multiple subunits. Myc-Tag mouse mAb detects recombinant proteins containing the Myc tag. The antibody recognizes the Myc-tag EQKLISEEDL fused to either the amino- or carboxy- terminus of targeted proteins.

For Research Use Only

Thank you for your recent purchase.
If you would like to learn more about antibodies,please visit www.elabscience.com.

Focus on your research Service for life science

Applications:WB-Western Blot IHC-Immunohistochemistry IF-Immunofluorescence IP-Immunoprecipitation FC-Flow cytometry ChIP-Chromatin Immunoprecipitation Reactivity: H-Human R-Rat M-Mouse Mk-Monkey Dg-Dog Ch-Chicken Hm-Hamster Rb-Rabbit Sh-Sheep Pg-Pig Z-Zebrafish X-Xenopus C-Cow.