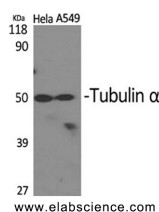


alpha Tubulin Polyclonal Antibody

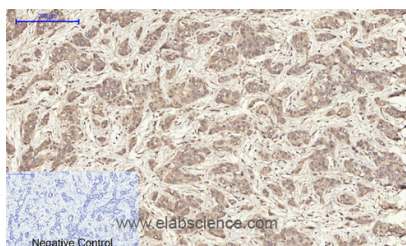
Catalog No.	E-AB-20069	Reactivity	H,M,R
Storage	Store at -20°C. Avoid freeze / thaw cycles.	Host	Rabbit
Applications	WB,IHC-p,IF,ELISA	Isotype	IgG

Note: Centrifuge before opening to ensure complete recovery of vial contents.

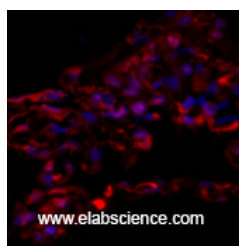
Images



Western Blot analysis of HeLa, A549 cells using alpha Tubulin Polyclonal Antibody at dilution of 1:2000.



Immunohistochemistry of paraffin-embedded Human liver cancer tissue using alpha Tubulin Polyclonal Antibody at dilution of 1:200.



Immunofluorescence analysis of Human lung tissue using alpha Tubulin Polyclonal Antibody at dilution of 1:200.

Immunogen Information

Immunogen	Synthesized peptide derived from the C-terminal region of human Tubulin α
Swissprot	Q71U36,P68363
Synonyms	TUBA1A,TUBA3,Tubulin alpha-1A chain,Alpha-tubulin 3,Tubulin B-alpha-1,Tubulin alpha-3 chain,TUBA1B,Tubulin alpha-1B chain,Alpha-tubulin ubiquitous,Tubulin K-alpha-1,Tubulin alpha-ubiquitous chain

Product Information

Calculated MW	50kDa
Observed MW	50kDa
Buffer	PBS with 0.02% sodium azide, 0.5% protective protein and 50% glycerol, pH7.4
Purify	Affinity purification
Dilution	WB 1:500-1:2000, IHC 1:100-1:300, IF 1:200-1:1000, ELISA 1:5000

Background

There are five tubulins in human cells: alpha, beta, gamma, delta, and epsilon. Tubulins are conserved across species. They form heterodimers, which multimerize to form a microtubule filament. An alpha and beta tubulin heterodimer is the basic structural unit of microtubules. The heterodimer does not come apart, once formed. The alpha and beta tubulins, which are each about 55 kDa MW, are homologous but not identical. Alpha, beta, and gamma tubulins have all been used as loading controls. Tubulin expression may vary according to resistance to antimicrobial and antimitotic drugs.

For Research Use Only

Thank you for your recent purchase.
 If you would like to learn more about antibodies, please visit www.elabscience.com.

Focus on your research Service for life science

Applications:WB-Western Blot IHC-Immunohistochemistry IF-Immunofluorescence IP-Immunoprecipitation FC-Flow cytometry ChIP-Chromatin Immunoprecipitation Reactivity: H-Human R-Rat M-Mouse Mk-Monkey Dg-Dog Ch-Chicken Hm-Hamster Rb-Rabbit Sh-Sheep Pg-Pig Z-Zebrafish X-Xenopus C-Cow.