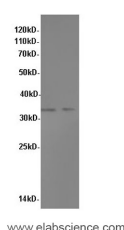


## MYD88 Polyclonal Antibody

<b>Catalog No.</b>	E-AB-40054	<b>Reactivity</b>	H
<b>Storage</b>	Store at -20°C. Avoid freeze / thaw cycles.	<b>Host</b>	Rabbit
<b>Applications</b>	WB	<b>Isotype</b>	IgG

**Note:** Centrifuge before opening to ensure complete recovery of vial contents.

### Images



Western Blot analysis of HepG-2 and K562 cells using MyD88 Polyclonal Antibody at dilution of 1:600

### Immunogen Information

<b>Immunogen</b>	Recombinant human Myeloid differentiation primary response protein MyD88 protein
<b>Gene Accession</b>	BC013589
<b>Swissprot</b>	Q99836
<b>Synonyms</b>	MYD88, Myeloid differentiation marker 88, Myeloid differentiation primary response gene, Myeloid differentiation primary response protein MyD88

### Product Information

<b>Calculated MW</b>	33kDa
<b>Observed MW</b>	33kDa
<b>Buffer</b>	PBS with 0.05% Proclin300 and 50% glycerol, pH7.4.
<b>Purify</b>	Affinity purification
<b>Dilution</b>	WB 1:500-1:1000

### Background

Adapter protein involved in the Toll-like receptor and IL-1 receptor signaling pathway in the innate immune response. Acts via IRAK1, IRAK2, IRF7 and TRAF6, leading to NF-kappa-B activation, cytokine secretion and the inflammatory response. Increases IL-8 transcription. Involved in IL-18-mediated signaling pathway.

#### For Research Use Only

Thank you for your recent purchase.

If you would like to learn more about antibodies, please visit [www.elabscience.com](http://www.elabscience.com).

**Focus on your research  
 Service for life science**

Applications: WB-Western Blot IHC-Immunohistochemistry IF-Immunofluorescence IP-Immunoprecipitation FC-Flow cytometry ChIP-Chromatin Immunoprecipitation Reactivity: H-Human R-Rat M-Mouse Mk-Monkey Dg-Dog Ch-Chicken Hm-Hamster Rb-Rabbit Sh-Sheep Pg-Pig Z-Zebrafish X-Xenopus C-Cow.