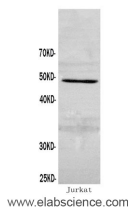


CASP2 Polyclonal Antibody

Catalog No.	E-AB-40077	Reactivity	H
Storage	Store at -20°C. Avoid freeze / thaw cycles.	Host	Rabbit
Applications	WB	Isotype	IgG

Note: Centrifuge before opening to ensure complete recovery of vial contents.

Images



Western Blot analysis of Jurkat cells using Casp2 Polyclonal Antibody at dilution of 1:600

Immunogen Information

Immunogen	Recombinant Human Caspase-2 protein
Swissprot	P42575
Synonyms	CASP 2, CASP-2, Casp2, Caspase 2, , ICH 1, ICH 1 protease, ICH 1L, ICH1, ICH1 protease, ICH1L, NEDD-2, NEDD2, PPP1R57, Protease ICH-1

Product Information

Calculated MW	49 kDa
Observed MW	49 kDa
Buffer	PBS with 0.05% Proclin300 and 50% glycerol, pH7.4.
Purify	Affinity purification
Dilution	WB 1:500-1:1000

Background

Involved in the activation cascade of caspases responsible for apoptosis execution. Might function by either activating some proteins required for cell death or inactivating proteins necessary for cell survival.

For Research Use Only

Thank you for your recent purchase.

If you would like to learn more about antibodies, please visit www.elabscience.com.

**Focus on your research
Service for life science**

Applications:WB-Western Blot IHC-Immunohistochemistry IF-Immunofluorescence IP-Immunoprecipitation FC-Flow cytometry ChIP-Chromatin Immunoprecipitation Reactivity: H-Human R-Rat M-Mouse Mk-Monkey Dg-Dog Ch-Chicken Hm-Hamster Rb-Rabbit Sh-Sheep Pg-Pig Z-Zebrafish X-Xenopus C-Cow.