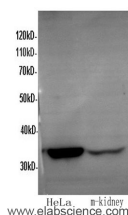


## ANXA5 Polyclonal Antibody

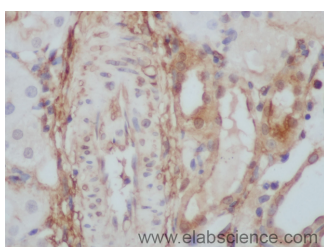
<b>Catalog No.</b>	E-AB-40114	<b>Reactivity</b>	H,M,R
<b>Storage</b>	Store at -20°C. Avoid freeze / thaw cycles.	<b>Host</b>	Rabbit
<b>Applications</b>	WB,IHC	<b>Isotype</b>	IgG

**Note:** Centrifuge before opening to ensure complete recovery of vial contents.

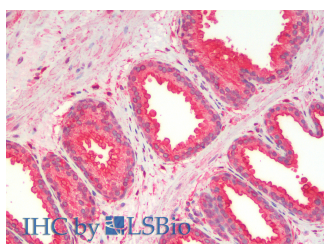
### Images



Western Blot analysis of HeLa and Mouse kidney using ANXA5 Polyclonal Antibody at dilution of 1:600



Immunohistochemistry of paraffin-embedded Rat kidney using ANXA5 Polyclonal Antibody at dilution of 1:50



Immunohistochemistry analysis of paraffin-embedded Human Prostate using ANXA5 Polyclonal Antibody(Elabscience® Product Detected by Lifespan).

### Immunogen Information

<b>Immunogen</b>	Recombinant human Annexin A5 protein
<b>Swissprot</b>	P08758
<b>Synonyms</b>	Anchorin CII,Annexin A5,Annexin V,Annexin-5,ANX5,ANXA5,Calphobindin I,Endonexin II,ENX2,Lipocortin V,PAP I,Pp4,VAC-alpha

### Product Information

<b>Calculated MW</b>	36KDa
<b>Observed MW</b>	36KDa
<b>Buffer</b>	PBS with 0.05% Proclin300 and 50% glycerol, pH7.4.
<b>Purify</b>	Affinity purification
<b>Dilution</b>	WB 1:500-1:1000,IHC 1:50-1:100

### Background

This protein is an anticoagulant protein that acts as an indirect inhibitor of the thromboplastin-specific complex, which is involved in the blood coagulation cascade.

#### For Research Use Only

Thank you for your recent purchase.  
 If you would like to learn more about antibodies, please visit [www.elabscience.com](http://www.elabscience.com).

**Focus on your research  
 Service for life science**

Applications:WB-Western Blot IHC-Immunohistochemistry IF-Immunofluorescence IP-Immunoprecipitation FC-Flow cytometry ChIP-Chromatin Immunoprecipitation Reactivity: H-Human R-Rat M-Mouse Mk-Monkey Dg-Dog Ch-Chicken Hm-Hamster Rb-Rabbit Sh-Sheep Pg-Pig Z-Zebrafish X-Xenopus C-Cow.