

## Cleaved-CASP1 (D210) Polyclonal Antibody

**Catalog No.** E-AB-30002

**Note:** Centrifuge before opening to ensure complete recovery of vial contents.

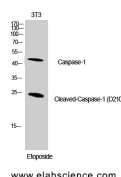
### Description

<b>Reactivity</b>	Human
<b>Immunogen</b>	Synthesized peptide derived from the Internal region of human Caspase-1
<b>Host</b>	Rabbit
<b>Isotype</b>	IgG
<b>Purification</b>	Affinity purification
<b>Conjugation</b>	Unconjugated
<b>Buffer</b>	PBS with 0.02% sodium azide, 0.5% BSA and 50% glycerol, pH7.4

### Applications Recommended Dilution

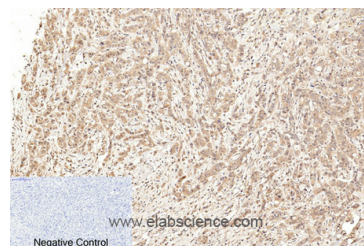
**WB 1:500-2000, IHC**  
**1:50-300, IF 1:50-300**

### Data

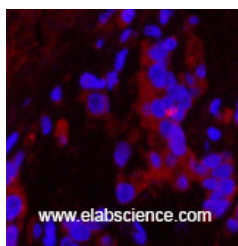


Western Blot analysis of NIH-3T3 cells using Cleaved-CASP1 (D210) Polyclonal Antibody at dilution of 1:1000.

**Observed Mw:25kDa**  
**Calculated Mw:45kDa**



Immunohistochemistry of paraffin-embedded Human breast cancer tissue using Cleaved-CASP1 (D210) Polyclonal Antibody at dilution of 1:200.



Immunofluorescence analysis of Human stomach cancer tissue using Cleaved-CASP1 (D210) Polyclonal Antibody at dilution of 1:200.

### Preparation & Storage

**Storage** Store at -20°C. Avoid freeze / thaw cycles.

### For Research Use Only

## Background

Thiol protease that cleaves IL-1 beta between an Asp and an Ala, releasing the mature cytokine which is involved in a variety of inflammatory processes. Important for defense against pathogens. Cleaves and activates sterol regulatory element binding proteins (SREBPs). Can also promote apoptosis.

---

## For Research Use Only