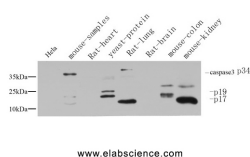


## Cleaved-CASP3 p17 (D175) Polyclonal Antibody

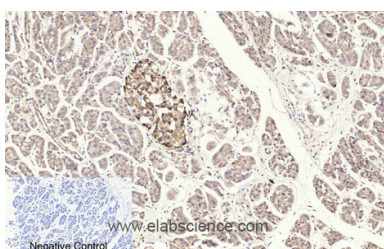
<b>Catalog No.</b>	E-AB-30004	<b>Reactivity</b>	H,M,R
<b>Storage</b>	Store at -20°C. Avoid freeze / thaw cycles.	<b>Host</b>	Rabbit
<b>Applications</b>	WB,IHC-p,IF,ELISA	<b>Isotype</b>	IgG

**Note:** Centrifuge before opening to ensure complete recovery of vial contents.

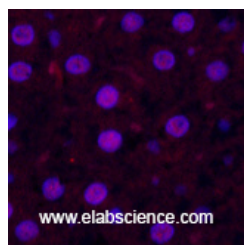
### Images



Western Blot analysis of various cells using Cleaved-CASP3 p17 (D175) Polyclonal Antibody at dilution of 1:1000.



Immunohistochemistry of paraffin-embedded Human stomach cancer tissue using Cleaved-CASP3 p17 (D175) Polyclonal Antibody at dilution of 1:200.



Immunofluorescence analysis of Rat liver tissue using Cleaved-CASP3 p17 (D175) Polyclonal Antibody at dilution of 1:200.

### Immunogen Information

<b>Immunogen</b>	Synthesized peptide derived from the Internal region of human Caspase-3 p17
<b>Swissprot</b>	P42574
<b>Synonyms</b>	CASP3, CPP32, Caspase-3, CASP-3, Apopain, Cysteine protease CPP32, CPP-32, Protein Yama, SREBP cleavage activity 1, SCA-1

### Product Information

<b>Calculated MW</b>	32kDa
<b>Observed MW</b>	20kDa
<b>Buffer</b>	PBS with 0.02% sodium azide, 0.5% protective protein and 50% glycerol, pH7.4
<b>Purify</b>	Affinity purification
<b>Dilution</b>	WB 1:500-2000, IHC 1:50-300, IF 1:50-300

### Background

Involved in the activation cascade of caspases responsible for apoptosis execution. At the onset of apoptosis it proteolytically cleaves poly(ADP-ribose) polymerase (PARP) at a '216-Asp-Gly-217' bond. Cleaves and activates sterol regulatory element binding proteins (SREBPs) between the basic helix-loop-helix leucine zipper domain and the membrane attachment domain. Cleaves and activates caspase-6, -7 and -9. Involved in the cleavage of huntingtin.

### For Research Use Only

Thank you for your recent purchase.  
 If you would like to learn more about antibodies, please visit [www.elabscience.com](http://www.elabscience.com).

### Focus on your research Service for life science

Applications:WB-Western Blot IHC-Immunohistochemistry IF-Immunofluorescence IP-Immunoprecipitation FC-Flow cytometry ChIP-Chromatin Immunoprecipitation Reactivity: H-Human R-Rat M-Mouse Mk-Monkey Dg-Dog Ch-Chicken Hm-Hamster Rb-Rabbit Sh-Sheep Pg-Pig Z-Zebrafish X-Xenopus C-Cow.