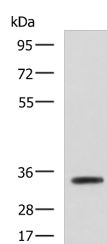


ANXA13 Polyclonal Antibody

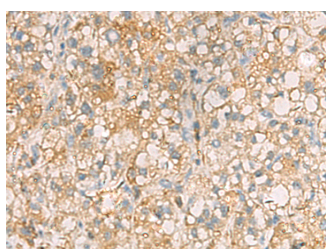
Catalog No.	E-AB-52134	Reactivity	H,M
Storage	Store at -20°C. Avoid freeze / thaw cycles.	Host	Rabbit
Applications	WB,IHC,ELISA	Isotype	IgG

Note: Centrifuge before opening to ensure complete recovery of vial contents.

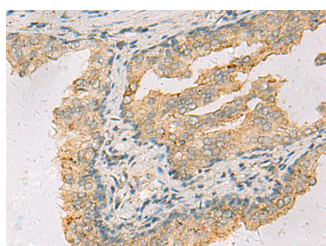
Images



Western blot analysis of Mouse small intestines tissue lysate using ANXA13 Polyclonal Antibody at dilution of 1:800



Immunohistochemistry of paraffin-embedded Human liver cancer tissue using ANXA13 Polyclonal Antibody at dilution of 1:105(x200)



Immunohistochemistry of paraffin-embedded Human prostate cancer tissue using ANXA13 Polyclonal Antibody at dilution of 1:105(x200)

Immunogen Information

Immunogen	Fusion protein of human ANXA13
Gene Accession	BC125158
Swissprot	P27216
Synonyms	Annexin A13,Annexin XIII,Annexin,intestine-specific,Annexin-13,ANX 13,ANX A13,ANX13,ANX13,ANXA13,Intestine Specific Annexin,ISA

Product Information

Calculated MW	35 kDa
Observed MW	Refer to figures
Buffer	PBS with 0.05% NaN ₃ and 40% Glycerol,pH7.4
Purify	Antigen affinity purification
Dilution	WB 1:500-1:2000, IHC 1:100-1:300, ELISA 1:5000-1:10000

Background

This gene encodes a member of the annexin family. Members of this calcium-dependent phospholipid-binding protein family play a role in the regulation of cellular growth and in signal transduction pathways. The specific function of this gene has not yet been determined; however, it is associated with the plasma membrane of undifferentiated, proliferating endothelial cells and differentiated villus enterocytes. Alternatively spliced transcript variants encoding different isoforms have been identified.

For Research Use Only

Thank you for your recent purchase.
 If you would like to learn more about antibodies, please visit www.elabscience.com.

**Focus on your research
 Service for life science**

Applications:WB-Western Blot IHC-Immunohistochemistry IF-Immunofluorescence IP-Immunoprecipitation FC-Flow cytometry ChIP-Chromatin Immunoprecipitation Reactivity: H-Human R-Rat M-Mouse Mk-Monkey Dg-Dog Ch-Chicken Hm-Hamster Rb-Rabbit Sh-Sheep Pg-Pig Z-Zebrafish X-Xenopus C-Cow.