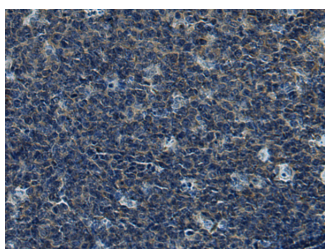


## CUL5 Polyclonal Antibody

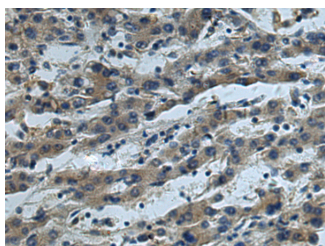
<b>Catalog No.</b>	E-AB-52146	<b>Reactivity</b>	H,M,R
<b>Storage</b>	Store at -20°C. Avoid freeze / thaw cycles.	<b>Host</b>	Rabbit
<b>Applications</b>	IHC,ELISA	<b>Isotype</b>	IgG

**Note:** Centrifuge before opening to ensure complete recovery of vial contents.

### Images



Immunohistochemistry of paraffin-embedded Human tonsil tissue using CUL5 Polyclonal Antibody at dilution of 1:55(×200)



Immunohistochemistry of paraffin-embedded Human liver cancer tissue using CUL5 Polyclonal Antibody at dilution of 1:55(×200)

### Immunogen Information

<b>Immunogen</b>	Fusion protein of human CUL5
<b>Gene Accession</b>	BC063306
<b>Swissprot</b>	Q93034
<b>Synonyms</b>	CUL 5,CUL-5,CUL5,CUL5,VACM1,VACM-1,VACM1

### Product Information

<b>Buffer</b>	PBS with 0.05% NaN3 and 40% Glycerol,pH7.4
<b>Purify</b>	Antigen affinity purification
<b>Dilution</b>	IHC 1:50-1:200, ELISA 1:5000-1:10000

### Background

CUL5 (Cullin 5) is a Protein Coding gene. Among its related pathways are Innate Immune System and CDK-mediated phosphorylation and removal of Cdc6. Gene Ontology (GO) annotations related to this gene include protein heterodimerization activity and ubiquitin protein ligase binding. An important paralog of this gene is CUL1.

#### For Research Use Only

Thank you for your recent purchase.  
 If you would like to learn more about antibodies, please visit [www.elabscience.com](http://www.elabscience.com).

**Focus on your research  
 Service for life science**

Applications:WB-Western Blot IHC-Immunohistochemistry IF-Immunofluorescence IP-Immunoprecipitation FC-Flow cytometry ChIP-Chromatin Immunoprecipitation Reactivity: H-Human R-Rat M-Mouse Mk-Monkey Dg-Dog Ch-Chicken Hm-Hamster Rb-Rabbit Sh-Sheep Pg-Pig Z-Zebrafish X-Xenopus C-Cow.