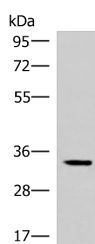


FOSL2 Polyclonal Antibody

Catalog No.	E-AB-52151	Reactivity	H,M,R
Storage	Store at -20°C. Avoid freeze / thaw cycles.	Host	Rabbit
Applications	WB,ELISA	Isotype	IgG

Note: Centrifuge before opening to ensure complete recovery of vial contents.

Images



Western blot analysis of Mouse adrenal gland tissue lysate using FOSL2 Polyclonal Antibody at dilution of 1:550

Immunogen Information

Immunogen	Fusion protein of human FOSL2
Gene Accession	BC022791
Swissprot	P15408
Synonyms	FLJ23306,Fos L2,FOS like antigen 2,Fos related antigen 2,Fos-related antigen 2,FosL 2,Fosl2,FOSL2,FRA 2,FRA-2

Product Information

Calculated MW	35 kDa
Observed MW	Refer to figures
Buffer	PBS with 0.05% NaN ₃ and 40% Glycerol,pH7.4
Purify	Antigen affinity purification
Dilution	WB 1:500-1:2000, ELISA 1:5000-1:10000

Background

The Fos gene family consists of 4 members: FOS, FOSB, FOSL1, and FOSL2. These genes encode leucine zipper proteins that can dimerize with proteins of the JUN family, thereby forming the transcription factor complex AP-1. As such, the FOS proteins have been implicated as regulators of cell proliferation, differentiation, and transformation.

For Research Use Only

Thank you for your recent purchase.

If you would like to learn more about antibodies, please visit www.elabscience.com.

**Focus on your research
 Service for life science**

Applications:WB-Western Blot IHC-Immunohistochemistry IF-Immunofluorescence IP-Immunoprecipitation FC-Flow cytometry ChIP-Chromatin Immunoprecipitation Reactivity: H-Human R-Rat M-Mouse Mk-Monkey Dg-Dog Ch-Chicken Hm-Hamster Rb-Rabbit Sh-Sheep Pg-Pig Z-Zebrafish X-Xenopus C-Cow.