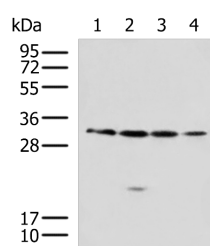


RCHY1 Polyclonal Antibody

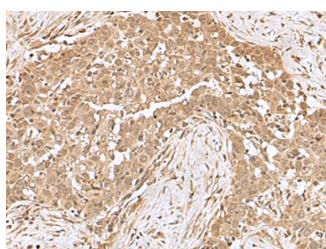
Catalog No.	E-AB-52167	Reactivity	H,M
Storage	Store at -20°C. Avoid freeze / thaw cycles.	Host	Rabbit
Applications	WB,IHC,ELISA	Isotype	IgG

Note: Centrifuge before opening to ensure complete recovery of vial contents.

Images



Western blot analysis of 293T A549 Jurkat 231 cell lysates using RCHY1 Polyclonal Antibody at dilution of 1:650



Immunohistochemistry of paraffin-embedded Human esophagus cancer tissue using RCHY1 Polyclonal Antibody at dilution of 1:50(×200)

Immunogen Information

Immunogen	Fusion protein of human RCHY1
Gene Accession	BC047393
Swissprot	Q96PM5
Synonyms	hARNIP,hPirh2,PIRH2E,PIRH2F,PRO1996,RCHY1, RING finger protein 199,RNF199,ZCHY,ZFP 363,zinc finger CHY type,Zinc finger protein 363,ZN363,ZNF363

Product Information

Calculated MW	30 kDa
Observed MW	Refer to figures
Buffer	PBS with 0.05% NaN ₃ and 40% Glycerol,pH7.4
Purify	Antigen affinity purification
Dilution	WB 1:500-1:2000, IHC 1:50-1:200, ELISA 1:5000-1:10000

Background

The protein encoded by this gene has ubiquitin ligase activity. It mediates E3-dependent ubiquitination and proteasomal degradation of target proteins, including TP53, HDAC1 and CDKN1B, thus regulating their levels and cell cycle progression. Alternatively spliced transcript variants encoding different isoforms have been described for this gene.

For Research Use Only

Thank you for your recent purchase.
 If you would like to learn more about antibodies, please visit www.elabscience.com.

**Focus on your research
 Service for life science**

Applications:WB-Western Blot IHC-Immunohistochemistry IF-Immunofluorescence IP-Immunoprecipitation FC-Flow cytometry ChIP-Chromatin Immunoprecipitation Reactivity: H-Human R-Rat M-Mouse Mk-Monkey Dg-Dog Ch-Chicken Hm-Hamster Rb-Rabbit Sh-Sheep Pg-Pig Z-Zebrafish X-Xenopus C-Cow.