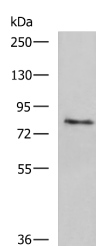


## TGM3 Polyclonal Antibody

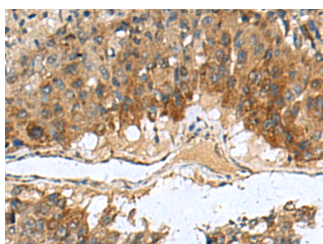
<b>Catalog No.</b>	E-AB-52171	<b>Reactivity</b>	H
<b>Storage</b>	Store at -20°C. Avoid freeze / thaw cycles.	<b>Host</b>	Rabbit
<b>Applications</b>	WB,IHC,ELISA	<b>Isotype</b>	IgG

**Note:** Centrifuge before opening to ensure complete recovery of vial contents.

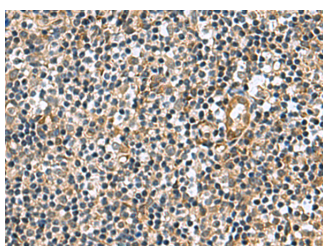
### Images



Western blot analysis of Human skin tissue lysate using TGM3 Polyclonal Antibody at dilution of 1:1600



Immunohistochemistry of paraffin-embedded Human liver cancer tissue using TGM3 Polyclonal Antibody at dilution of 1:110(×200)



Immunohistochemistry of paraffin-embedded Human tonsil tissue using TGM3 Polyclonal Antibody at dilution of 1:110(×200)

### Immunogen Information

<b>Immunogen</b>	Fusion protein of human TGM3
<b>Gene Accession</b>	BC109076
<b>Swissprot</b>	Q08188
<b>Synonyms</b>	TGase E,TGase-3,TGE,TGM3,TGM3,Transglutaminase E,Transglutaminase-3,Transglutaminase3,TransglutaminaseE

### Product Information

<b>Calculated MW</b>	77 kDa
<b>Observed MW</b>	Refer to figures
<b>Buffer</b>	PBS with 0.05% NaN <sub>3</sub> and 40% Glycerol,pH7.4
<b>Purify</b>	Antigen affinity purification
<b>Dilution</b>	WB 1:1000-1:5000, IHC 1:100-1:300, ELISA 1:5000-1:10000

### Background

Transglutaminases are enzymes that catalyze the crosslinking of proteins by epsilon-gamma glutamyl lysine isopeptide bonds. While the primary structure of transglutaminases is not conserved, they all have the same amino acid sequence at their active sites and their activity is calcium-dependent. The protein encoded by this gene consists of two polypeptide chains activated from a single precursor protein by proteolysis. The encoded protein is involved the later stages of cell envelope formation in the epidermis and hair follicle.

#### For Research Use Only

Thank you for your recent purchase.  
 If you would like to learn more about antibodies, please visit [www.elabscience.com](http://www.elabscience.com).

**Focus on your research**  
**Service for life science**

Applications:WB-Western Blot IHC-Immunohistochemistry IF-Immunofluorescence IP-Immunoprecipitation FC-Flow cytometry ChIP-Chromatin Immunoprecipitation Reactivity: H-Human R-Rat M-Mouse Mk-Monkey Dg-Dog Ch-Chicken Hm-Hamster Rb-Rabbit Sh-Sheep Pg-Pig Z-Zebrafish X-Xenopus C-Cow.