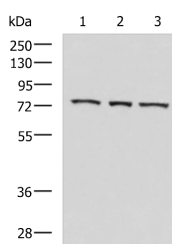


ABI2 Polyclonal Antibody

Catalog No.	E-AB-52174	Reactivity	H,M
Storage	Store at -20°C. Avoid freeze / thaw cycles.	Host	Rabbit
Applications	WB,ELISA	Isotype	IgG

Note: Centrifuge before opening to ensure complete recovery of vial contents.

Images



Western blot analysis of K562 cell Mouse heart tissue Jurkat cell lysates using ABI2 Polyclonal Antibody at dilution of 1:550

Immunogen Information

Immunogen	Fusion protein of human ABI2
Gene Accession	BC001439
Swissprot	Q9NYB9
Synonyms	ABI 2,Abi-2,ABI2,ABI2,ABI2B,Abl binding protein 3,Abl-binding protein 3,AblBP3,AIP 1,ArgBP1,ARGBPIA,ArgBPIB

Product Information

Calculated MW	56 kDa
Observed MW	Refer to figures
Buffer	PBS with 0.05% NaN ₃ and 40% Glycerol,pH7.4
Purify	Antigen affinity purification
Dilution	WB 1:500-1:2000, ELISA 1:5000-1:10000

Background

May act in regulation of cell growth and transformation by interacting with nonreceptor tyrosine kinases ABL1 and/or ABL2. Part of the WAVE complex that regulates lamellipodia formation. The WAVE complex regulates actin filament reorganization via its interaction with the Arp2/3 complex. Regulates ABL1/c-Abl-mediated phosphorylation of MENA. As component of the WAVE1 complex, required for BDNF-NTRK2 endocytic trafficking and signaling from early endosomes.

For Research Use Only

Thank you for your recent purchase.

If you would like to learn more about antibodies, please visit www.elabscience.com.

**Focus on your research
 Service for life science**

Applications:WB-Western Blot IHC-Immunohistochemistry IF-Immunofluorescence IP-Immunoprecipitation FC-Flow cytometry ChIP-Chromatin Immunoprecipitation Reactivity: H-Human R-Rat M-Mouse Mk-Monkey Dg-Dog Ch-Chicken Hm-Hamster Rb-Rabbit Sh-Sheep Pg-Pig Z-Zebrafish X-Xenopus C-Cow.