

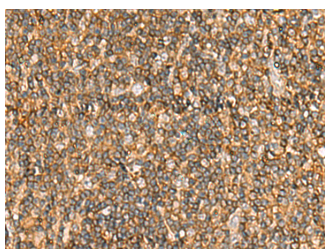
NLRC4 Polyclonal Antibody

Catalog No. E-AB-52183
Storage Store at -20°C. Avoid freeze / thaw cycles.
Applications IHC,ELISA

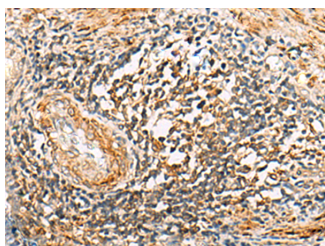
Reactivity H
Host Rabbit
Isotype IgG

Note: Centrifuge before opening to ensure complete recovery of vial contents.

Images



Immunohistochemistry of paraffin-embedded Human tonsil tissue using NLRC4 Polyclonal Antibody at dilution of 1:50(×200)



Immunohistochemistry of paraffin-embedded Human prostate cancer tissue using NLRC4 Polyclonal Antibody at dilution of 1:50(×200)

Immunogen Information

Immunogen Fusion protein of human NLRC4
Gene Accession BC031555
Swissprot Q9NPP4
Synonyms CARD 12,CARD,CLAN 1,CLAN A,CLAN,CLAN B,CLAN C,CLAN D,CLAN1,CLANA,CLANB,CLANC,CLAND,NLRC 4,NLRC4,NLRC4

Product Information

Buffer PBS with 0.05% NaN₃ and 40% Glycerol,pH7.4
Purify Antigen affinity purification
Dilution IHC 1:50-1:200, ELISA 1:5000-1:10000

Background

This gene encodes a member of the caspase recruitment domain-containing NLR family. Family members play essential roles in innate immune response to a wide range of pathogenic organisms, tissue damage and other cellular stresses. Mutations in this gene result in autoinflammation with infantile enterocolitis. Alternative splicing results in multiple transcript variants.

For Research Use Only

Thank you for your recent purchase.
If you would like to learn more about antibodies, please visit www.elabscience.com.

Focus on your research Service for life science

Applications:WB-Western Blot IHC-Immunohistochemistry IF-Immunofluorescence IP-Immunoprecipitation FC-Flow cytometry ChIP-Chromatin Immunoprecipitation Reactivity: H-Human R-Rat M-Mouse Mk-Monkey Dg-Dog Ch-Chicken Hm-Hamster Rb-Rabbit Sh-Sheep Pg-Pig Z-Zebrafish X-Xenopus C-Cow.