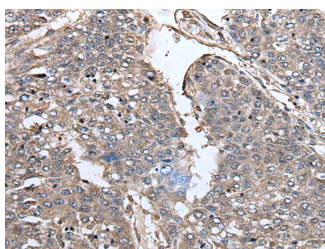


## PRUNE Polyclonal Antibody

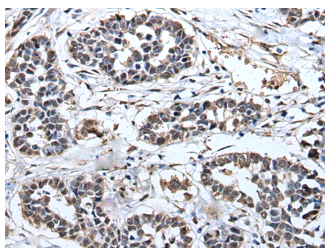
<b>Catalog No.</b>	E-AB-52201	<b>Reactivity</b>	H
<b>Storage</b>	Store at -20°C. Avoid freeze / thaw cycles.	<b>Host</b>	Rabbit
<b>Applications</b>	IHC,ELISA	<b>Isotype</b>	IgG

**Note:** Centrifuge before opening to ensure complete recovery of vial contents.

### Images



Immunohistochemistry of paraffin-embedded Human liver cancer tissue using PRUNE Polyclonal Antibody at dilution of 1:40(×200)



Immunohistochemistry of paraffin-embedded Human esophagus cancer tissue using PRUNE Polyclonal Antibody at dilution of 1:40(×200)

### Immunogen Information

<b>Immunogen</b>	Full length fusion protein
<b>Gene Accession</b>	BC063481
<b>Swissprot</b>	Q86TP1
<b>Synonyms</b>	DRES-17,DRES17,Drosophila-related expressed sequence 17,hPrune,HTcD37,Protein prune homolog,PRUNE,Prune homolog,PRUNE like protein,PRUNE,TcD37 homolog

### Product Information

<b>Buffer</b>	PBS with 0.05% NaN <sub>3</sub> and 40% Glycerol,pH7.4
<b>Purify</b>	Antigen affinity purification
<b>Dilution</b>	IHC 1:30-1:150, ELISA 1:5000-1:10000

### Background

This gene encodes a member of the DHH protein superfamily of phosphoesterases. This protein has been found to function as both a nucleotide phosphodiesterase and an exopolyphosphatase. This protein is believed to stimulate cancer progression and metastases through the induction of cell motility. A pseudogene has been identified on chromosome 13. Alternative splicing results in multiple transcript variants.

#### For Research Use Only

Thank you for your recent purchase.  
 If you would like to learn more about antibodies, please visit [www.elabscience.com](http://www.elabscience.com).

**Focus on your research  
 Service for life science**

Applications:WB-Western Blot IHC-Immunohistochemistry IF-Immunofluorescence IP-Immunoprecipitation FC-Flow cytometry ChIP-Chromatin Immunoprecipitation Reactivity: H-Human R-Rat M-Mouse Mk-Monkey Dg-Dog Ch-Chicken Hm-Hamster Rb-Rabbit Sh-Sheep Pg-Pig Z-Zebrafish X-Xenopus C-Cow.