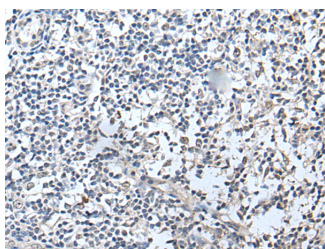


RERG Polyclonal Antibody

Catalog No.	E-AB-52209	Reactivity	H,M
Storage	Store at -20°C. Avoid freeze / thaw cycles.	Host	Rabbit
Applications	IHC,ELISA	Isotype	IgG

Note: Centrifuge before opening to ensure complete recovery of vial contents.

Images



Immunohistochemistry of paraffin-embedded Human tonsil tissue using RERG Polyclonal Antibody at dilution of 1:50(×200)

Immunogen Information

Immunogen	Full length fusion protein
Gene Accession	BC007997
Swissprot	Q96A58
Synonyms	MGC15754,RAS like estrogen regulated growth inhibitor,Ras related and estrogen regulated growth inhibitor,Rerg,RERG_HUMAN,Weakly similar to N ras protein

Product Information

Buffer	PBS with 0.05% NaN3 and 40% Glycerol,pH7.4
Purify	Antigen affinity purification
Dilution	IHC 1:30-1:150, ELISA 1:5000-1:10000

Background

RERG, a member of the RAS superfamily of GTPases, inhibits cell proliferation and tumor formation

For Research Use Only

Thank you for your recent purchase.

If you would like to learn more about antibodies, please visit www.elabscience.com.

**Focus on your research
Service for life science**

Applications:WB-Western Blot IHC-Immunohistochemistry IF-Immunofluorescence IP-Immunoprecipitation FC-Flow cytometry ChIP-Chromatin Immunoprecipitation Reactivity: H-Human R-Rat M-Mouse Mk-Monkey Dg-Dog Ch-Chicken Hm-Hamster Rb-Rabbit Sh-Sheep Pg-Pig Z-Zebrafish X-Xenopus C-Cow.