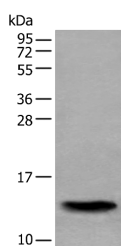


## SAA4 Polyclonal Antibody

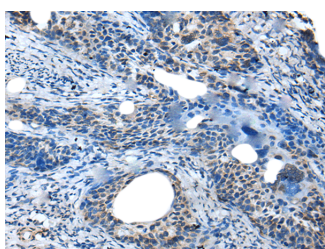
<b>Catalog No.</b>	E-AB-52210	<b>Reactivity</b>	H
<b>Storage</b>	Store at -20°C. Avoid freeze / thaw cycles.	<b>Host</b>	Rabbit
<b>Applications</b>	WB,IHC,ELISA	<b>Isotype</b>	IgG

**Note:** Centrifuge before opening to ensure complete recovery of vial contents.

### Images



Western blot analysis of Human normal stomach tissue lysate using SAA4 Polyclonal Antibody at dilution of 1:350



Immunohistochemistry of paraffin-embedded Human cervical cancer tissue using SAA4 Polyclonal Antibody at dilution of 1:35(×200)

### Immunogen Information

<b>Immunogen</b>	Full length fusion protein
<b>Gene Accession</b>	BC007026
<b>Swissprot</b>	P35542
<b>Synonyms</b>	Amyloid A, serum, 4,C SAA,C-SAA,Constitutively expressed serum amyloid A protein,CSAA,SAA 4,Saa4,SAA4 protein,SAA4_HUMAN

### Product Information

<b>Calculated MW</b>	15 kDa
<b>Observed MW</b>	Refer to figures
<b>Buffer</b>	PBS with 0.05% NaN <sub>3</sub> and 40% Glycerol,pH7.4
<b>Purify</b>	Antigen affinity purification
<b>Dilution</b>	WB 1:500-1:2000, IHC 1:25-1:100, ELISA 1:5000-1:10000

### Background

SAA4 (Serum Amyloid A4, Constitutive) is a Protein Coding gene. Diseases associated with SAA4 include Unicentric Castleman Disease and Amyloidosis Aa. Among its related pathways are Folate Metabolism. Gene Ontology (GO) annotations related to this gene include chemoattractant activity. An important paralog of this gene is SAA2-SAA4.

#### For Research Use Only

Thank you for your recent purchase.  
 If you would like to learn more about antibodies, please visit [www.elabscience.com](http://www.elabscience.com).

**Focus on your research  
 Service for life science**

Applications:WB-Western Blot IHC-Immunohistochemistry IF-Immunofluorescence IP-Immunoprecipitation FC-Flow cytometry ChIP-Chromatin Immunoprecipitation Reactivity: H-Human R-Rat M-Mouse Mk-Monkey Dg-Dog Ch-Chicken Hm-Hamster Rb-Rabbit Sh-Sheep Pg-Pig Z-Zebrafish X-Xenopus C-Cow.