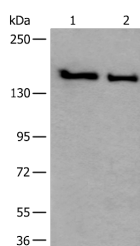


SMC1A Polyclonal Antibody

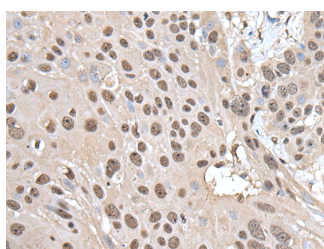
Catalog No.	E-AB-52219	Reactivity	H,M,R
Storage	Store at -20°C. Avoid freeze / thaw cycles.	Host	Rabbit
Applications	WB,IHC,ELISA	Isotype	IgG

Note: Centrifuge before opening to ensure complete recovery of vial contents.

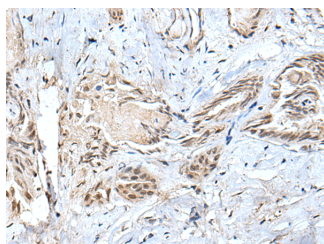
Images



Western blot analysis of HUVEC and Jurkat cell lysates using SMC1A Polyclonal Antibody at dilution of 1:300



Immunohistochemistry of paraffin-embedded Human esophagus cancer tissue using SMC1A Polyclonal Antibody at dilution of 1:30(×200)



Immunohistochemistry of paraffin-embedded Human thyroid cancer tissue using SMC1A Polyclonal Antibody at dilution of 1:30(×200)

Immunogen Information

Immunogen	Fusion protein of human SMC1A
Gene Accession	BC112127
Swissprot	Q14683
Synonyms	SMC protein 1A,SMC-1-alpha,SMC-1A,SMC1,SMC1 A,SMC1A,SMC1alpha,SMC1L1,SMCB

Product Information

Calculated MW	143 kDa
Observed MW	Refer to figures
Buffer	PBS with 0.05% NaN ₃ and 40% Glycerol,pH7.4
Purify	Antigen affinity purification
Dilution	WB 1:500-1:2000, IHC 1:25-1:100, ELISA 1:5000-1:10000

Background

Proper cohesion of sister chromatids is a prerequisite for the correct segregation of chromosomes during cell division. The cohesin multiprotein complex is required for sister chromatid cohesion. This complex is composed partly of two structural maintenance of chromosomes (SMC) proteins, SMC3 and either SMC1B or the protein encoded by this gene. Most of the cohesin complexes dissociate from the chromosomes before mitosis, although those complexes at the kinetochore remain. Therefore, the encoded protein is thought to be an important part of functional kinetochores. In addition, this protein interacts with BRCA1 and is phosphorylated by ATM, indicating a potential role for this protein in DNA repair. This gene, which belongs to the SMC gene family, is located in an area of the X-chromosome that escapes X inactivation. Mutations in this gene result in Cornelia de Lange syndrome. Alternative splicing results in multiple transcript variants encoding different isoforms.

For Research Use Only

Thank you for your recent purchase.
 If you would like to learn more about antibodies, please visit www.elabscience.com.

**Focus on your research
 Service for life science**

Applications:WB-Western Blot IHC-Immunohistochemistry IF-Immunofluorescence IP-Immunoprecipitation FC-Flow cytometry ChIP-Chromatin Immunoprecipitation Reactivity: H-Human R-Rat M-Mouse Mk-Monkey Dg-Dog Ch-Chicken Hm-Hamster Rb-Rabbit Sh-Sheep Pg-Pig Z-Zebrafish X-Xenopus C-Cow.