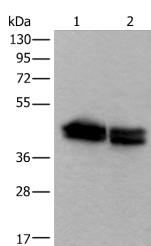


TIA1 Polyclonal Antibody

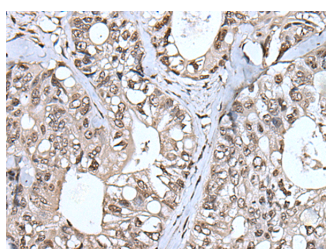
Catalog No.	E-AB-52223	Reactivity	H,M
Storage	Store at -20°C. Avoid freeze / thaw cycles.	Host	Rabbit
Applications	WB,IHC,ELISA	Isotype	IgG

Note: Centrifuge before opening to ensure complete recovery of vial contents.

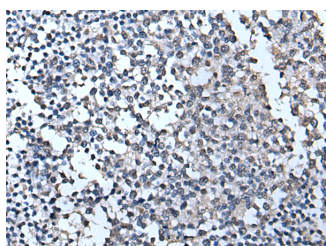
Images



Western blot analysis of HEPG2 and NIH/3T3 cell lysates using TIA1 Polyclonal Antibody at dilution of 1:600



Immunohistochemistry of paraffin-embedded Human colorectal cancer tissue using TIA1 Polyclonal Antibody at dilution of 1:55(×200)



Immunohistochemistry of paraffin-embedded Human tonsil tissue using TIA1 Polyclonal Antibody at dilution of 1:55(×200)

Immunogen Information

Immunogen	Full length fusion protein
Gene Accession	BC015944
Swissprot	P31483
Synonyms	RNA binding protein TIA 1, RNA binding protein TIA1, TIA 1, TIA-1, TIA1, TIA1 protein, TIA1, TIAL1, TIAR, WDM

Product Information

Calculated MW	43 kDa
Observed MW	Refer to figures
Buffer	PBS with 0.05% NaN ₃ and 40% Glycerol, pH7.4
Purify	Antigen affinity purification
Dilution	WB 1:1000-1:5000, IHC 1:40-1:250, ELISA 1:5000-1:10000

Background

The product encoded by this gene is a member of a RNA-binding protein family and possesses nucleolytic activity against cytotoxic lymphocyte (CTL) target cells. It has been suggested that this protein may be involved in the induction of apoptosis as it preferentially recognizes poly(A) homopolymers and induces DNA fragmentation in CTL targets. The major granule-associated species is a 15-kDa protein that is thought to be derived from the carboxyl terminus of the 40-kDa product by proteolytic processing. Alternative splicing resulting in different isoforms of this gene product has been described in the literature.

For Research Use Only

Thank you for your recent purchase.
 If you would like to learn more about antibodies, please visit www.elabscience.com.

Focus on your research
Service for life science

Applications: WB-Western Blot IHC-Immunohistochemistry IF-Immunofluorescence IP-Immunoprecipitation FC-Flow cytometry ChIP-Chromatin Immunoprecipitation Reactivity: H-Human R-Rat M-Mouse Mk-Monkey Dg-Dog Ch-Chicken Hm-Hamster Rb-Rabbit Sh-Sheep Pg-Pig Z-Zebrafish X-Xenopus C-Cow.