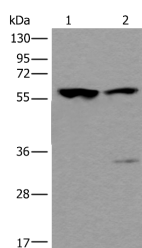


## TRIM27 Polyclonal Antibody

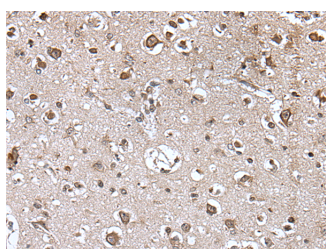
|                     |   |                   |        |
|---------------------|---|-------------------|--------|
| <b>Catalog No.</b>  | E-AB-52224                                  | <b>Reactivity</b> | H,M    |
| <b>Storage</b>      | Store at -20°C. Avoid freeze / thaw cycles. | <b>Host</b>       | Rabbit |
| <b>Applications</b> | WB,IHC,ELISA                                | <b>Isotype</b>    | IgG    |

**Note:** Centrifuge before opening to ensure complete recovery of vial contents.

### Images



Western blot analysis of Mouse testis tissue and Human testis tissue lysates using TRIM27 Polyclonal Antibody at dilution of 1:400



Immunohistochemistry of paraffin-embedded Human brain tissue using TRIM27 Polyclonal Antibody at dilution of 1:45(×200)

### Immunogen Information

|                       |   |
|-----------------------|---|
| <b>Immunogen</b>      | Fusion protein of human TRIM27  |
| <b>Gene Accession</b> | BC013580  |
| <b>Swissprot</b>      | P14373  |
| <b>Synonyms</b>       | RNF76,TRI27,TRIM 27,Tripartite motif protein TRIM27,Zinc finger protein RFP |

### Product Information

|                      |  |
|----------------------|--|
| <b>Calculated MW</b> | 58 kDa   |
| <b>Observed MW</b>   | Refer to figures                                       |
| <b>Buffer</b>        | PBS with 0.05% NaN <sub>3</sub> and 40% Glycerol,pH7.4 |
| <b>Purify</b>        | Antigen affinity purification                          |
| <b>Dilution</b>      | WB 1:500-1:2000, IHC 1:30-1:150, ELISA 1:5000-1:10000  |

### Background

This gene encodes a member of the tripartite motif (TRIM) family. The TRIM motif includes three zinc-binding domains, a RING, a B-box type 1 and a B-box type 2, and a coiled-coil region. This protein localizes to the nuclear matrix. It interacts with the enhancer of polycomb protein and represses gene transcription. It is also thought to be involved in the differentiation of male germ cells. Fusion of the N-terminus of this protein with the truncated C-terminus of the RET gene product has been shown to result in production of the ret transforming protein.

#### For Research Use Only

Thank you for your recent purchase.  
 If you would like to learn more about antibodies, please visit [www.elabscience.com](http://www.elabscience.com).

**Focus on your research  
 Service for life science**

Applications:WB-Western Blot IHC-Immunohistochemistry IF-Immunofluorescence IP-Immunoprecipitation FC-Flow cytometry ChIP-Chromatin Immunoprecipitation Reactivity: H-Human R-Rat M-Mouse Mk-Monkey Dg-Dog Ch-Chicken Hm-Hamster Rb-Rabbit Sh-Sheep Pg-Pig Z-Zebrafish X-Xenopus C-Cow.