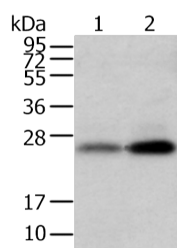


WFDC5 Polyclonal Antibody

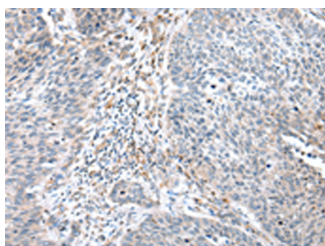
Catalog No.	E-AB-52238	Reactivity	H,M
Storage	Store at -20°C. Avoid freeze / thaw cycles.	Host	Rabbit
Applications	WB,IHC,ELISA	Isotype	IgG

Note: Centrifuge before opening to ensure complete recovery of vial contents.

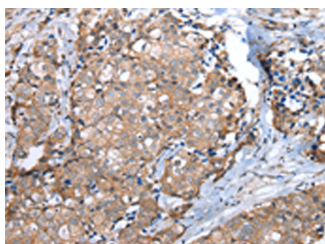
Images



Western blot analysis of Mouse trachea and brain tissue using WFDC5 Polyclonal Antibody at dilution of 1:1100



Immunohistochemistry of paraffin-embedded Human lung cancer tissue using WFDC5 Polyclonal Antibody at dilution of 1:60(x200)



Immunohistochemistry of paraffin-embedded Human breast cancer tissue using WFDC5 Polyclonal Antibody at dilution of 1:60(x200)

Immunogen Information

Immunogen	Fusion protein of human WFDC5
Gene Accession	BC039173
Swissprot	Q8TCV5
Synonyms	p53-responsive gene 5 protein, PRG5, Protease inhibitor WAP1, WAP four-disulfide core domain protein 5, WAP1, WFDC5, WFDC5

Product Information

Calculated MW	24 kDa
Observed MW	Refer to figures
Buffer	PBS with 0.05% NaN ₃ and 40% Glycerol, pH7.4
Purify	Antigen affinity purification
Dilution	WB 1:1000-1:5000, IHC 1:45-1:300, ELISA 1:2000-1:10000

Background

This gene encodes a member of the WAP-type four-disulfide core (WFDC) domain family. Most WFDC proteins contain only one WFDC domain, and this encoded protein contains two WFDC domains. The WFDC domain, or WAP signature motif, contains eight cysteines forming four disulfide bonds at the core of the protein, and functions as a protease inhibitor. Most WFDC gene members are localized to chromosome 20q12-q13 in two clusters: centromeric and telomeric. This gene belongs to the centromeric cluster.

For Research Use Only

Thank you for your recent purchase.
 If you would like to learn more about antibodies, please visit www.elabscience.com.

**Focus on your research
 Service for life science**

Applications: WB-Western Blot IHC-Immunohistochemistry IF-Immunofluorescence IP-Immunoprecipitation FC-Flow cytometry ChIP-Chromatin Immunoprecipitation Reactivity: H-Human R-Rat M-Mouse Mk-Monkey Dg-Dog Ch-Chicken Hm-Hamster Rb-Rabbit Sh-Sheep Pg-Pig Z-Zebrafish X-Xenopus C-Cow.