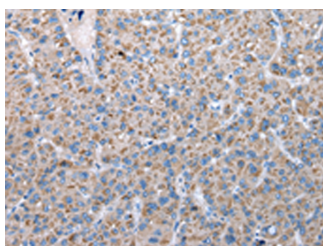


FKBPL Polyclonal Antibody

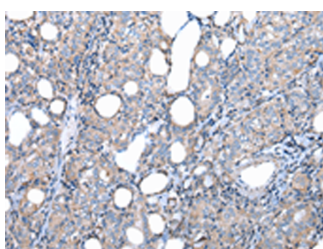
Catalog No.	E-AB-52239	Reactivity	H,M,R
Storage	Store at -20°C. Avoid freeze / thaw cycles.	Host	Rabbit
Applications	IHC,ELISA	Isotype	IgG

Note: Centrifuge before opening to ensure complete recovery of vial contents.

Images



Immunohistochemistry of paraffin-embedded Human liver cancer tissue using FKBPL Polyclonal Antibody at dilution of 1:50(×200)



Immunohistochemistry of paraffin-embedded Human thyroid cancer tissue using FKBPL Polyclonal Antibody at dilution of 1:50(×200)

Immunogen Information

Immunogen	Fusion protein of human FKBPL
Gene Accession	BC004168
Swissprot	Q9UIM3
Synonyms	DIR1,FK506 binding protein like,Fkbp1,FKBPL,NG7,WAF-1/CIP1 stabilizing protein 39,WISP39

Product Information

Buffer	PBS with 0.05% NaN ₃ and 40% Glycerol,pH7.4
Purify	Antigen affinity purification
Dilution	IHC 1:30-1:150, ELISA 1:2000-1:10000

Background

FKBPL,also named as DIR1,NG7 and WISp39,has similarity to the immunophilin protein family,which plays a role in immunoregulation and basic cellular processes involving protein folding and trafficking. This protein is thought to have a potential role in the induced radioresistance,probably by increasing the rate of DNA repair in cells exposed to X rays. Also it appears to have some involvement in general stress response in the control of the cell cycle. It regulates p21 protein stability by binding to Hsp90 and p21. Breast cancer cells stably overexpressing FKBPL became dependent on estrogen for their growth and were dramatically more sensitive to the antiestrogens tamoxifen and fulvestrant,whereas FKBPL knockdown reverses this phenotype. FKBPL is an estrogen-inducible gene that acts as a cochaperone in ER α /Hsp90 molecular complexes; furthermore,FKBPL levels may be both a prognostic indicator and determinant of response to endocrine therapy.

For Research Use Only

Thank you for your recent purchase.
 If you would like to learn more about antibodies,please visit www.elabscience.com.

**Focus on your research
 Service for life science**

Applications:WB-Western Blot IHC-Immunohistochemistry IF-Immunofluorescence IP-Immunoprecipitation FC-Flow cytometry ChIP-Chromatin Immunoprecipitation Reactivity: H-Human R-Rat M-Mouse Mk-Monkey Dg-Dog Ch-Chicken Hm-Hamster Rb-Rabbit Sh-Sheep Pg-Pig Z-Zebrafish X-Xenopus C-Cow.