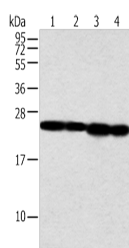


NDUFB9 Polyclonal Antibody

Catalog No.	E-AB-52258	Reactivity	H,M
Storage	Store at -20°C. Avoid freeze / thaw cycles.	Host	Rabbit
Applications	WB,ELISA	Isotype	IgG

Note: Centrifuge before opening to ensure complete recovery of vial contents.

Images



Western blot analysis of Jurkat and A549 cell human fetal liver tissue and hela cell using NDUFB9 Polyclonal Antibody at dilution of 1:350

Immunogen Information

Immunogen	Fusion protein of human NDUFB9
Gene Accession	BC007672
Swissprot	Q9Y6M9
Synonyms	B22,CI B22,CI-B22,DKFZp566O173,FLJ22885,I B22,LYR motif containing protein 3,NADH ubiquinone oxidoreductase B22 subunit,NDUB9,Ndufb9,UQOR22

Product Information

Calculated MW	22 kDa
Observed MW	Refer to figures
Buffer	PBS with 0.05% NaN ₃ and 40% Glycerol,pH7.4
Purify	Antigen affinity purification
Dilution	WB 1:500-1:2000, ELISA 1:2000-1:5000

Background

NADH dehydrogenase [ubiquinone] 1 beta subcomplex subunit 9 is an enzyme that in humans is encoded by theNDUFB9 gene. NADH dehydrogenase (ubiquinone) 1 beta subcomplex subunit 9 is an accessory subunit of the NADH dehydrogenase (ubiquinone) complex, located in the mitochondrial inner membrane. It is also known as Complex Iand is the largest of the five complexes of the electron transport chain.

For Research Use Only

Thank you for your recent purchase.
 If you would like to learn more about antibodies,please visit www.elabscience.com.

**Focus on your research
 Service for life science**

Applications:WB-Western Blot IHC-Immunohistochemistry IF-Immunofluorescence IP-Immunoprecipitation FC-Flow cytometry ChIP-Chromatin Immunoprecipitation Reactivity: H-Human R-Rat M-Mouse Mk-Monkey Dg-Dog Ch-Chicken Hm-Hamster Rb-Rabbit Sh-Sheep Pg-Pig Z-Zebrafish X-Xenopus C-Cow.