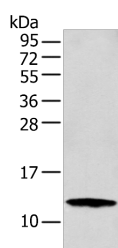


S100A16 Polyclonal Antibody

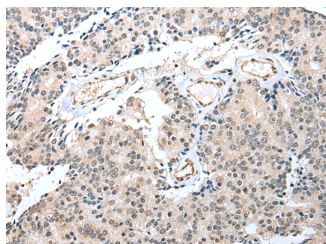
Catalog No.	E-AB-52266	Reactivity	H
Storage	Store at -20°C. Avoid freeze / thaw cycles.	Host	Rabbit
Applications	WB,IHC,ELISA	Isotype	IgG

Note: Centrifuge before opening to ensure complete recovery of vial contents.

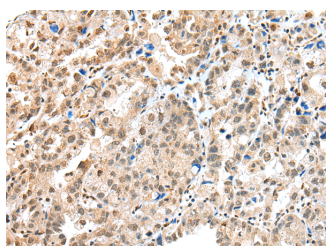
Images



Western blot analysis of MCF-7 cell using S100A16 Polyclonal Antibody at dilution of 1:300



Immunohistochemistry of paraffin-embedded Human prostate cancer tissue using S100A16 Polyclonal Antibody at dilution of 1:25(×200)



Immunohistochemistry of paraffin-embedded Human ovarian cancer tissue using S100A16 Polyclonal Antibody at dilution of 1:25(×200)

Immunogen Information

Immunogen	Full length fusion protein
Gene Accession	BC010541
Swissprot	Q96FQ6
Synonyms	Protein S100 A16,Protein S100-A16,Protein S100-F,Protein S100F,S100A16,S100F

Product Information

Calculated MW	12 kDa
Observed MW	Refer to figures
Buffer	PBS with 0.05% NaN ₃ and 40% Glycerol,pH7.4
Purify	Antigen affinity purification
Dilution	WB 1:500-1:2000, IHC 1:25-1:100, ELISA 1:5000-1:10000

Background

S100A16 (S100 Calcium Binding Protein A16) is a Protein Coding gene. Diseases associated with S100A16 include Robinow Syndrome, Autosomal Recessive and Robinow Syndrome. Gene Ontology (GO) annotations related to this gene include protein homodimerization activity.

For Research Use Only

Thank you for your recent purchase.
 If you would like to learn more about antibodies, please visit www.elabscience.com.

**Focus on your research
 Service for life science**

Applications:WB-Western Blot IHC-Immunohistochemistry IF-Immunofluorescence IP-Immunoprecipitation FC-Flow cytometry ChIP-Chromatin Immunoprecipitation Reactivity: H-Human R-Rat M-Mouse Mk-Monkey Dg-Dog Ch-Chicken Hm-Hamster Rb-Rabbit Sh-Sheep Pg-Pig Z-Zebrafish X-Xenopus C-Cow.