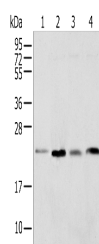


SPCS2 Polyclonal Antibody

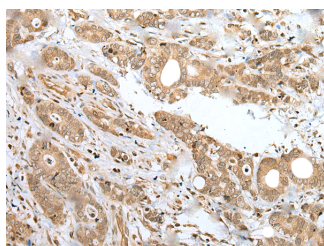
Catalog No.	E-AB-52301	Reactivity	H,M,R
Storage	Store at -20°C. Avoid freeze / thaw cycles.	Host	Rabbit
Applications	WB,IHC,ELISA	Isotype	IgG

Note: Centrifuge before opening to ensure complete recovery of vial contents.

Images



Western blot analysis of Rat lung tissue HT-29 cell Mouse adrenal gland tissue and K-562 cell using SPCS2 Polyclonal Antibody at dilution of 1:450



Immunohistochemistry of paraffin-embedded Human gastric cancer tissue using SPCS2 Polyclonal Antibody at dilution of 1:35(×200)

Immunogen Information

Immunogen	Fusion protein of human SPCS2
Gene Accession	BC082231
Swissprot	Q15005
Synonyms	Signal peptidase complex subunit 2,SPase 25 kDa subunit,SPCS2,SPCS2

Product Information

Calculated MW	25 kDa
Observed MW	Refer to figures
Buffer	PBS with 0.05% NaN ₃ and 40% Glycerol,pH7.4
Purify	Antigen affinity purification
Dilution	WB 1:500-1:2000, IHC 1:25-1:100, ELISA 1:5000-1:10000

Background

SPCS2 (signal peptidase complex subunit 2), also known as SPC25 or microsomal signal peptidase 25 kDa subunit, is a 226 amino acid multi-pass membrane protein that localizes to both the microsome and the endoplasmic reticulum (ER), and belongs to the SPCS (signal peptidase complex subunit) family. Existing as a component of the microsomal signal peptidase complex which consists of five members, SPCS2 removes signal peptides from nascent proteins as they are translocated into the lumen of the ER. The gene encoding SPCS2 is located on human chromosome 11, which houses over 1,400 genes and comprises nearly 4% of the human genome.

For Research Use Only

Thank you for your recent purchase.
 If you would like to learn more about antibodies, please visit www.elabscience.com.

**Focus on your research
 Service for life science**

Applications:WB-Western Blot IHC-Immunohistochemistry IF-Immunofluorescence IP-Immunoprecipitation FC-Flow cytometry ChIP-Chromatin Immunoprecipitation Reactivity: H-Human R-Rat M-Mouse Mk-Monkey Dg-Dog Ch-Chicken Hm-Hamster Rb-Rabbit Sh-Sheep Pg-Pig Z-Zebrafish X-Xenopus C-Cow.